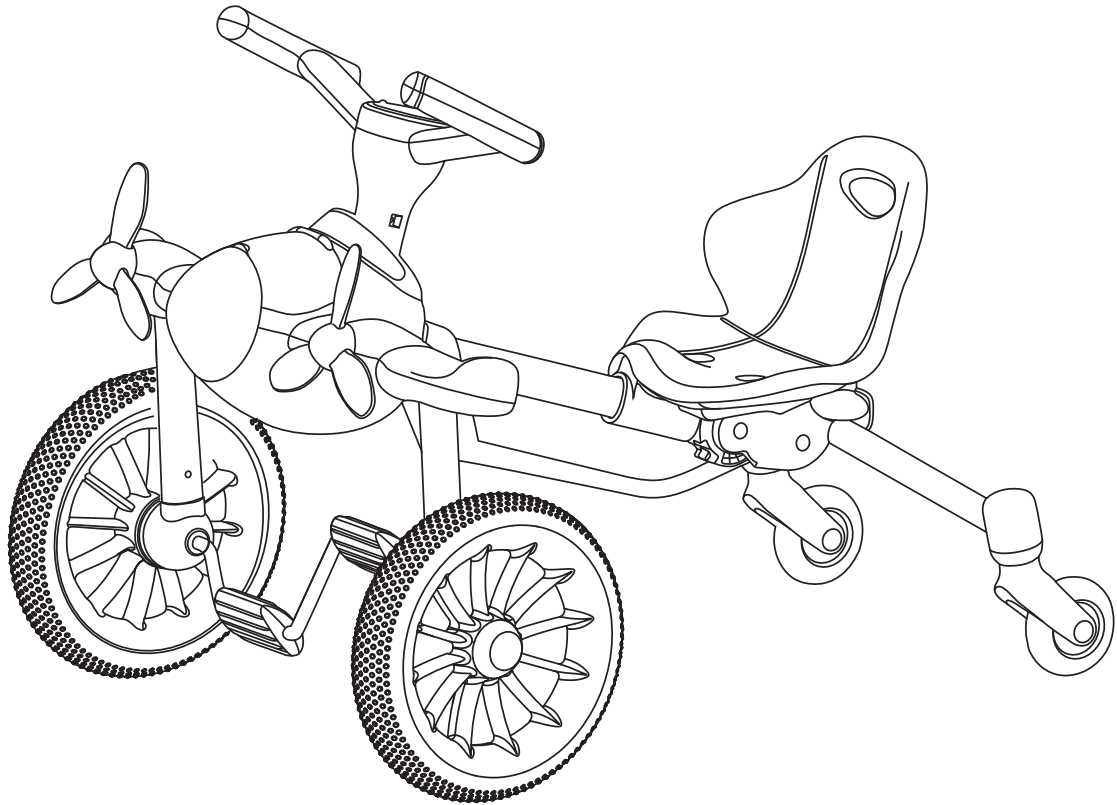




FLEX Pedal Drifter



Owner's Manual and Assembly Instructions

Model #: WP2028

Read and understand the entire manual before assembly and operation.
The vehicle must be assembled by an adult who has read and understands the instructions.

Made in China.

Styles and colors may vary . Do not return to store. Call 1-888-982-9309 for assistance and replacement parts.

IMPORTANT:
Save this manual with your sales receipt.



Introduction

Thank you for purchasing this Rollplay vehicle. We hope the rider enjoys it for miles to come. Please read this instruction guide carefully before assembling and operating the vehicle.

Keep your sales receipt and register your product at www.rollplay.com.

Please contact Rollplay Customer Service with any questions.

Please have your model number and serial number ready before calling.

Please have proof of purchase.

Hours: 8 AM - 5 PM EST, Monday - Friday

Phone: 1-888-982-9309

Email: customerservice@rollplay.com

Web: www.rollplay.com

Specifications:

AGE:	2½ and up
MAX WEIGHT:	25 kg (55 lb)
PRODUCT SIZE:	70.1 x 53 x 53.3 cm (27.5 x 20.8 x 21 in.)

IMPORTANT!

DO NOT RETURN YOUR PRODUCT TO THE STORE.
CONTACT ROLLPLAY WITH QUESTIONS.

E-mail Customer Service if you need assistance or replacement parts. Please have your model number and serial number ready before calling. Please provide proof of purchase. Keep your sales receipt and register your product at www.rollplay.com, as we require proof of purchase.

customerservice@rollplay.com

Read this entire manual prior to assembly to ensure safe operation of the vehicle.

4 Table of Contents

Safety	5
Parts	7
Front Wheel Assembly	8
Nose Cover Assembly	9
Propeller Assembly	10
Assembling the Seat	11
Folding	12
Unfolding	13
Seat Adjustment	14
Storage Compartment	15
General Care	16
Customer Service	17
Warranty	18
Product Registration	19



WARNING: SAFETY RIDING RULES

The user must follow all safety rules and guidelines or serious injury or death may occur.

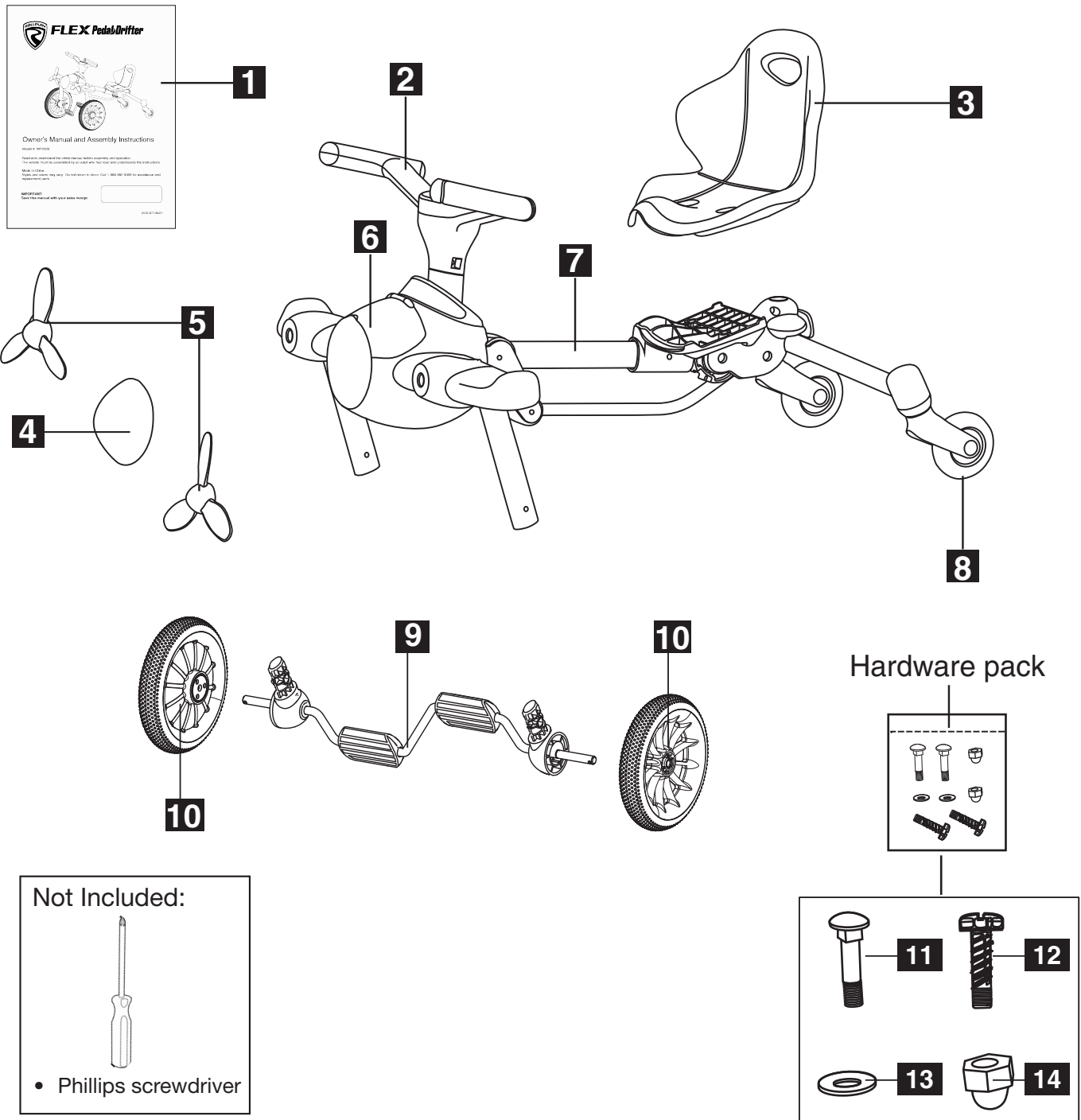
NEVER LEAVE CHILD UNATTENDED. ALWAYS keep child in view when child is in the vehicle. Direct adult supervision is **REQUIRED**.

- **ALWAYS** use common sense and safe practices when using the vehicle. The user must be at least 2½ years old and weigh no more than 25 kg (55 lbs).
- This product contains small parts that are for adult assembly only. Keep small children away when assembling. Remove and dispose of all protective material and plastic bags before assembly.
- Only sit on the seat of the vehicle.
- Do not allow more than one rider.
- Do not overload the vehicle. Do not remove the weight restriction decals.
- Do not tow the vehicle with another vehicle or similar device.
- Keep body parts, such as hands, legs and hair, and clothing away from moving parts. Moving parts can cause serious injury.
- **ALWAYS** wear shoes while using the vehicle.
- **NEVER** operate near roadways or motor vehicles.
- Do not operate near drop-offs, such as steps, steep inclines or hills. Operate on relatively level ground.
- Do not operate near water, swimming pools or other bodies of water.
- Do not operate in dangerous weather conditions such as rain or snow.
- Do not operate near loose dirt, mud, sand or fine gravel.
- Always use the vehicle in a safe, secure environment with adult supervision.
- Make sure that the child's feet are on the pedals before pushing the vehicle.
- Do not operate outside at night.



WARNING: ADULT SUPERVISION REQUIRED

- Before use, the rider must understand how to control the vehicle and safety issues.
- It is the responsibility of the adult to educate the child and to determine if the child is capable of understanding the vehicle controls.
- An adult must **ALWAYS** directly supervise the use of this vehicle.
- **NEVER** leave a child unsupervised on the vehicle.

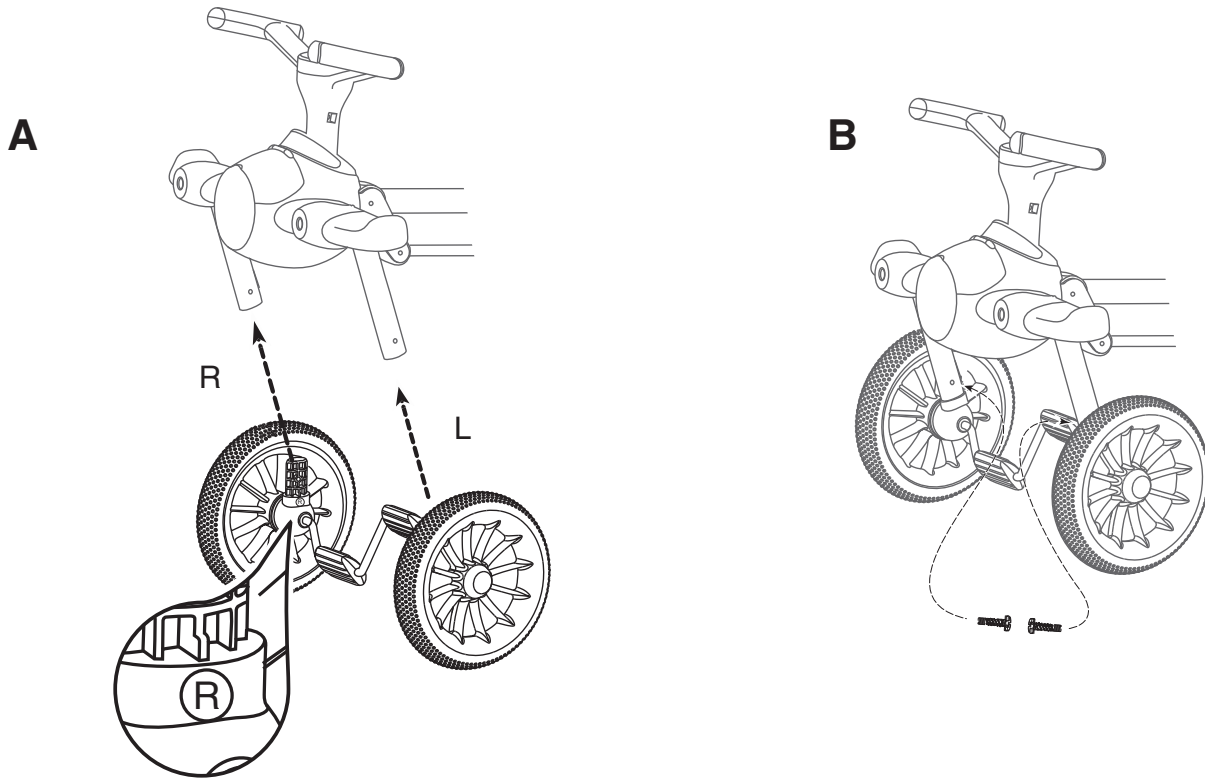


- 1. Manual
- 2. Handlebar
- 3. Seat
- 4. Nose cover
- 5. Propeller (x2)
- 6. Storage compartment

- 7. Frame
- 8. Wheel assembly
- 9. Foot pedal
- 10. Front wheel (L/R)

- 11. M6x15 Screw (x2)
- 12. M5x21Screw (x2)
- 13. Washer (x2)
- 14. Nut (x2)

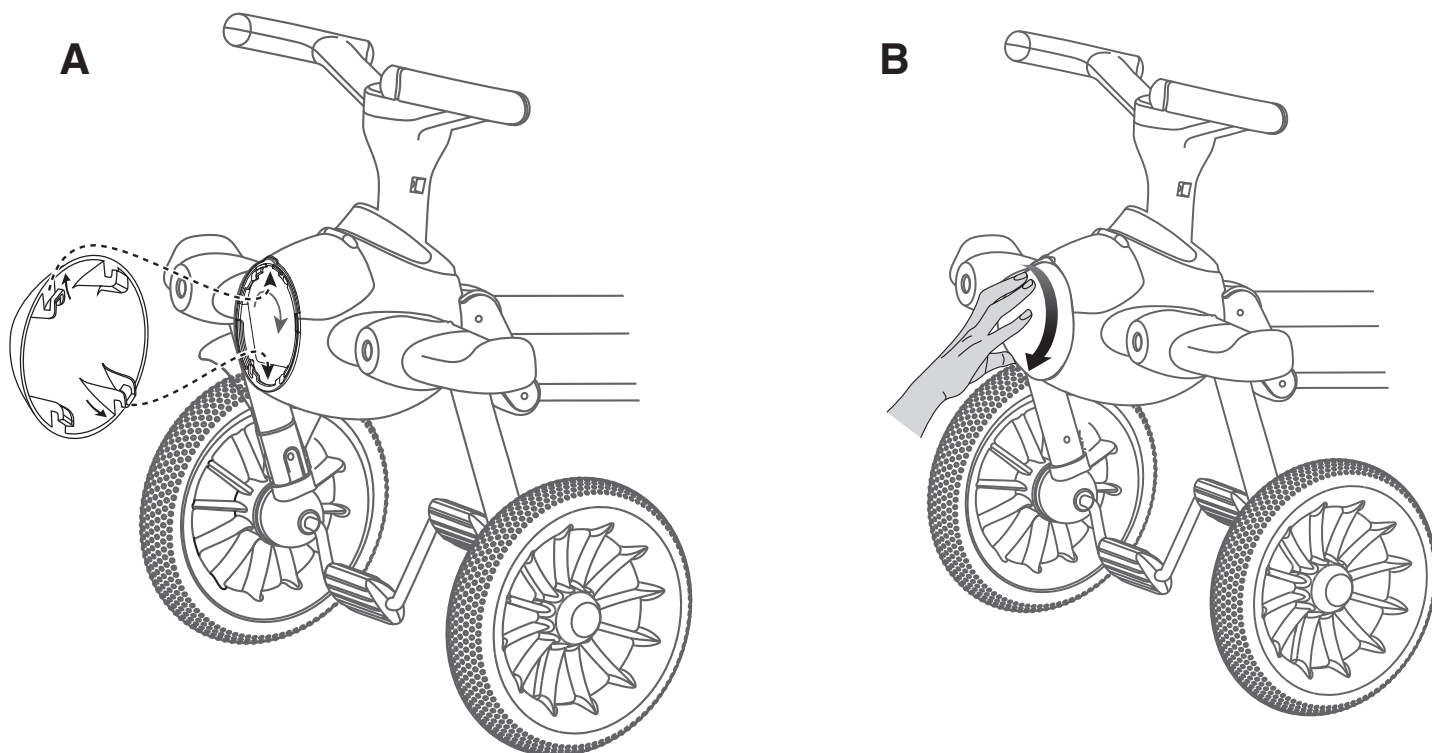
8 Front Wheel Assembly



A. Insert the plugs marked with "L" and "R" on the front wheel assembly into the front forks L/R.

B. Align the hole position according to the picture, then tighten and attach it with M5X21 screw using a Phillips screwdriver (not included).

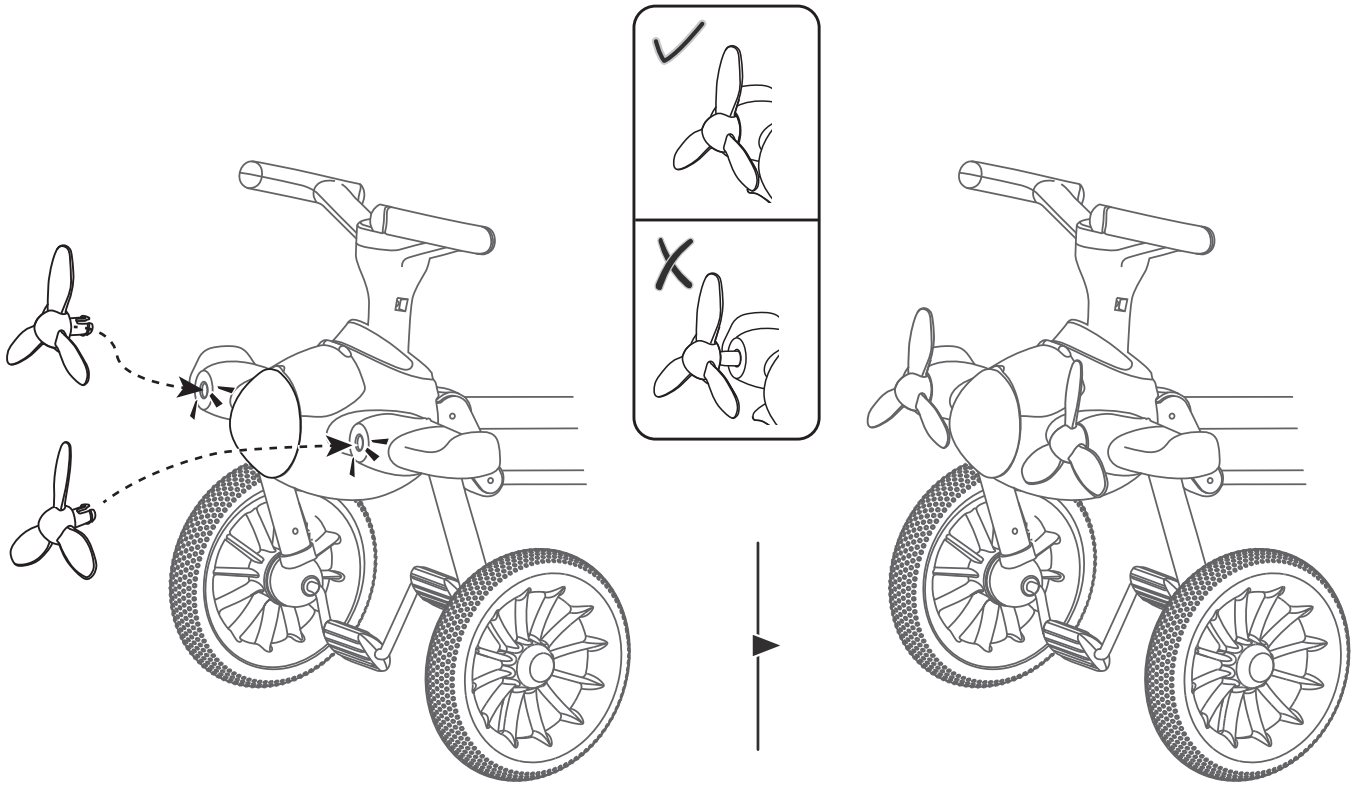
Nose Cover Assembly 9



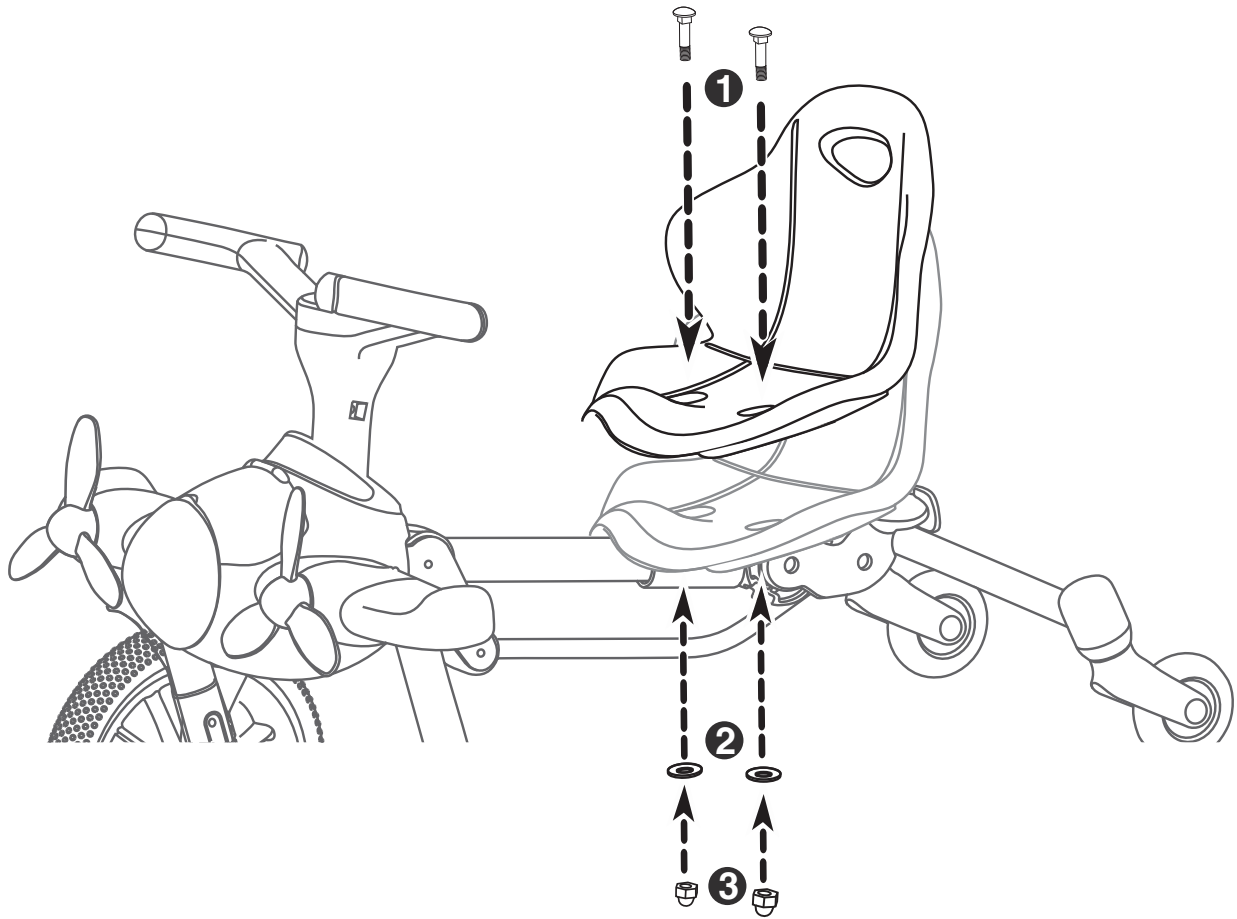
A. Insert the hooks marked with arrows on the inside of the nose cover into the slots with arrows on the front as shown in the figure.

B. Hold the nose cover and rotate it clockwise until it locks into place.

10 Propeller Assembly

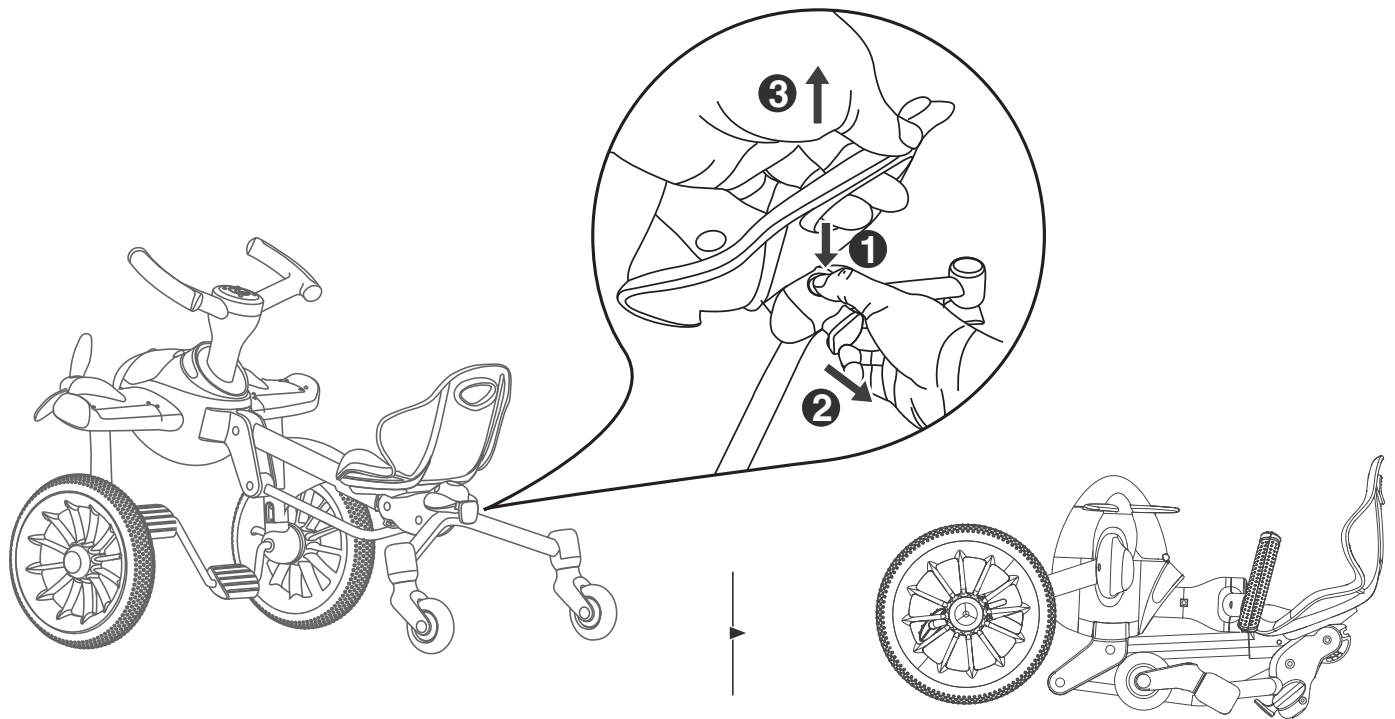


Insert the shaft on the propeller into the holes as shown. Firmly push in until a click is heard.

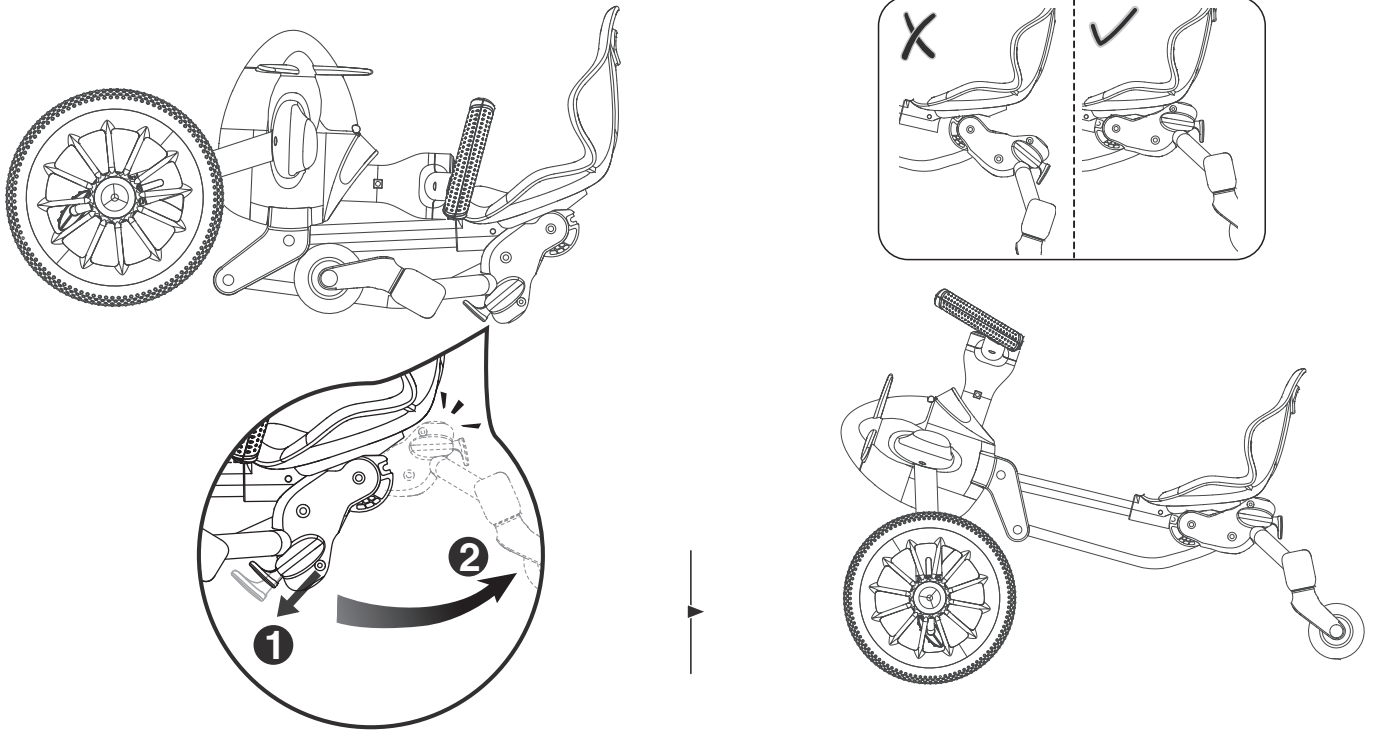


Put the M6X15 screws ① through the seat and seat base holes, add washers ② and lock with nut ③ as shown in the figure above.

12 Folding

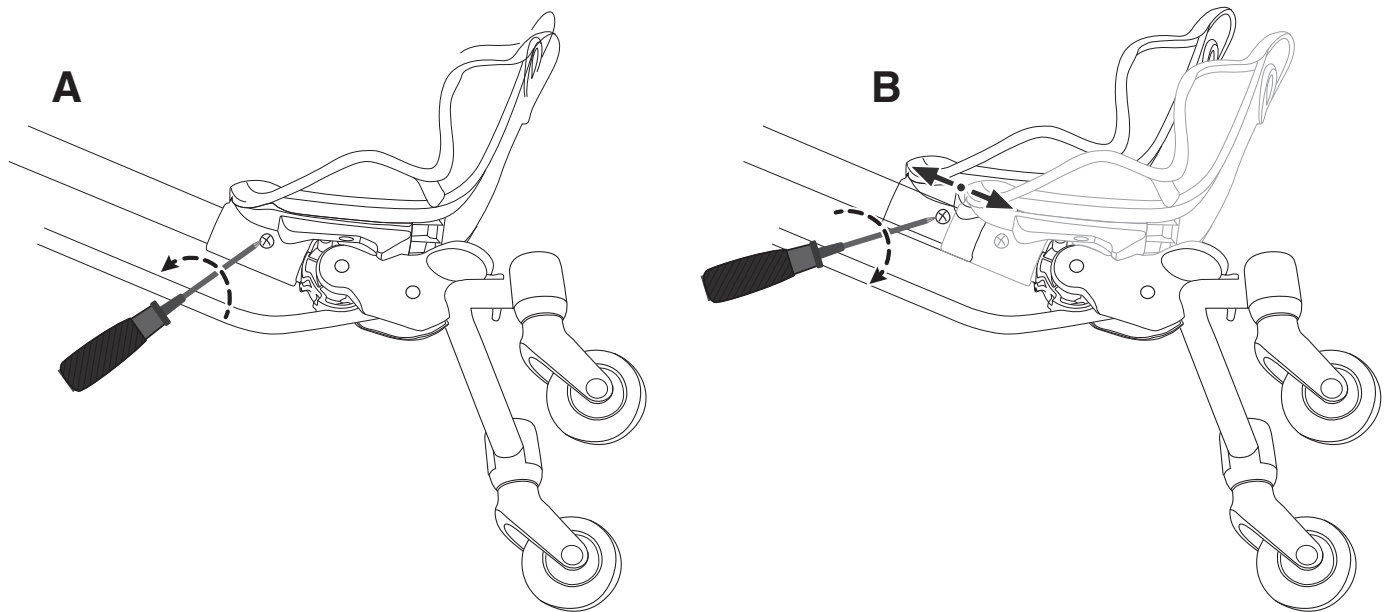


As shown in the figure above, press the folding button ① and pull the folding lever ② outward with one hand, then lift the seat up ③ with other hand to fold the vehicle. Folded vehicle will look like the figure above to the right.

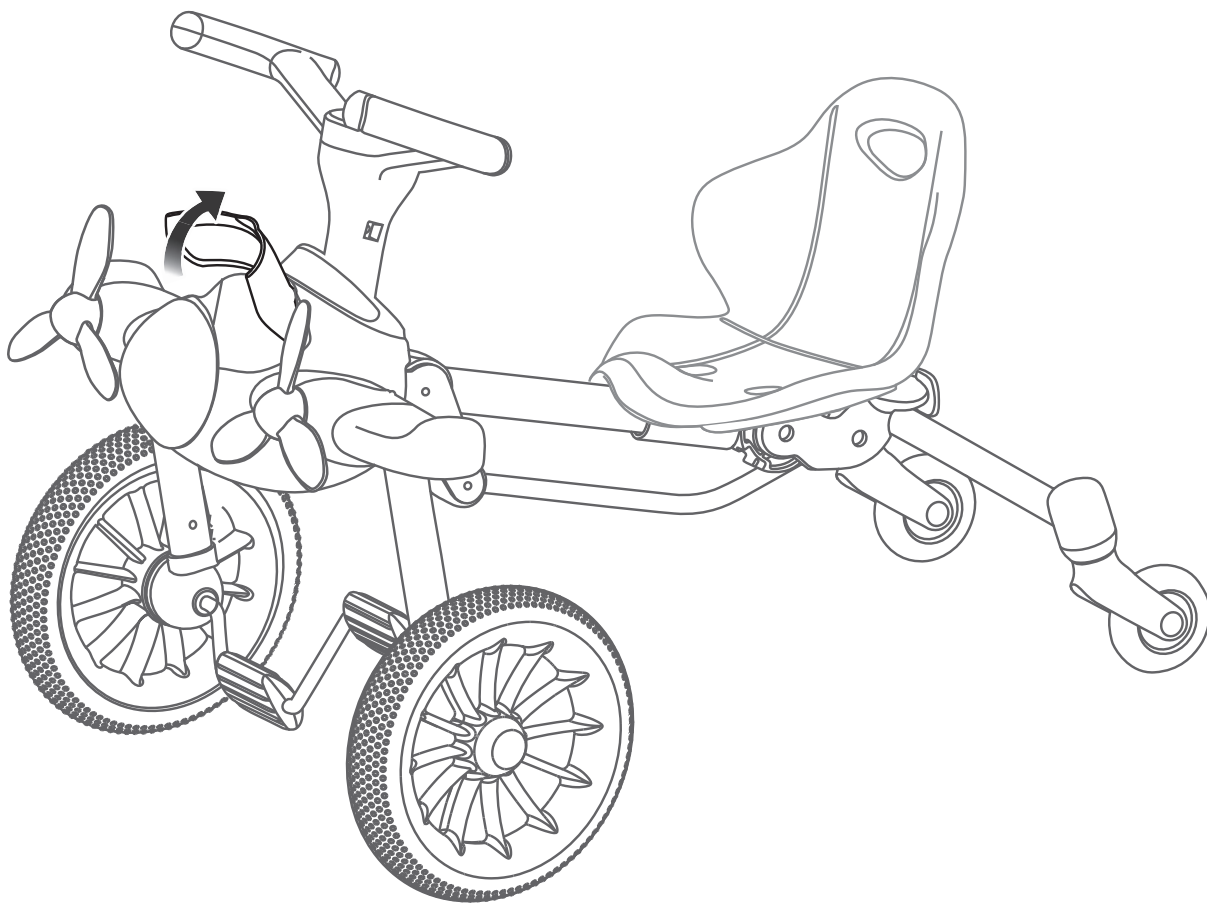


As shown in the figure above, pull the folding lever ① out and then rotate it in the direction of arrow ② until a "click" is heard. After unfolding completely, the vehicle will look like the figure above to the right.

14 Seat Adjustment



Loosen the side screw of the seat adjustment plate with a Phillips screwdriver (not included) as shown in figure A. The seat can now be moved forwards and backwards. After adjusting the position, tighten the side screw of the seat adjustment plate (figure B) to hold the seat in the new position.



Open the lid of the storage compartment according to the direction of the arrow as shown in the figure above.

16 General care

- Regularly inspect all vehicle parts to ensure they are in good working condition.
- Remove any damaged parts and immediately contact Customer Service for replacement parts. See Customer Service on Page 17 for more information.
- DO NOT operate the vehicle if there are any damaged parts.
- Carefully clean the vehicle with a damp cloth and mild soap.
- Store the vehicle indoors or use a tarp to cover it. Keep away from stoves, heaters, or other sources of heat.

Do not return your product to the store.

Contact Rollplay with questions.

If your product requires replacement parts, please contact Rollplay Customer Service.

Hours: 8 AM - 5 PM EST, Monday - Friday

Phone: 1-888-982-9309

Email: customerservice@rollplay.com

Web: www.rollplay.com

WE WILL REQUIRE PROOF OF PURCHASE. Please save your sales receipt or register your product at www.rollplay.com.

18 Warranty

- One-year limited warranty from the date of purchase with proof of purchase from a Rollplay certified retailer. This one-year limited warranty covers the ride-on vehicle against defects in materials and workmanship to the original purchaser. **Proof of purchase receipt from a Rollplay certified retailer is required.**
- This warranty covers normal use and does not cover the Rollplay vehicle if deemed damaged by unreasonable use, modification, neglect, accident, abuse, misuse, improper service or other causes not arising out of defects in materials or workmanship. Evidence of any attempt at customer repair will void this warranty.
- This warranty does not cover, and is not intended to exclude any liability on the part of Rollplay, whether under this warranty or implied by law for any indirect or consequential damages for breach of warranty. Some states may not allow the exclusion or limitation so this limitation may not apply to you.

Should you need service or assistance with your vehicle during the warranty period:

- Please do not return vehicle to the store.
- Consult the troubleshooting guide in this manual and online at www.rollplay.com
- Call Rollplay Customer Service at 1-888-982-9309

Note: This warranty gives you specific legal rights. You may also have other rights that may vary from state to state.

Please save your original sales receipt.

Fill out the form below and mail it to:

Rollplay
Attn: ParentLink
1801 Commerce Dr.
Piqua, OH 45356

OR fill out the form online at www.rollplay.com

We will use the information provided only for your warranty. We will not sell, rent or share your personal information.

Product Registration

First Name: _____ Last Name: _____ Title: _____

Address: _____

City: _____ State: _____ Zip Code: _____

Email: _____ Phone: _____

Date of Purchase: _____

The following product information is on the cover of the owner's manual.

Product Name: _____ Model Number: _____

Serial Number: _____ Retailer Place of Purchase: _____

