



BMW R1200GS Motorcycle (W348) Customer Service Guide



Customer Service Guide



Contents

I) Check Battery	3
II) Check Wiring Condition	6
III) Windshield Replacement	9
IV) Gearbox Replacement	10
V) Warning Stickers	14
VI) Schematic diagram	17
VII) Exploded View	18

CAUTION :

Disconnect the battery before proceeding
with the following steps.

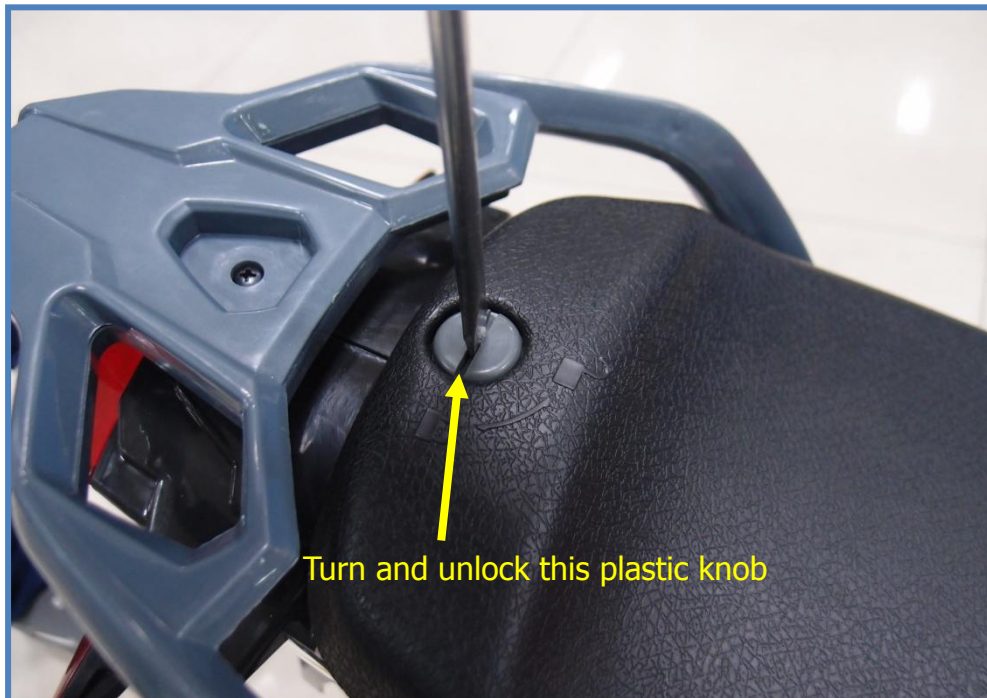
Customer Service Guide



I) Check Battery

Operation: Use a Flat head screwdriver to unlock and remove the seat. Locate the battery harness, unplug the connector, and then use a volt-meter to check the condition of the battery.

Step (1)



Turn and unlock this plastic knob

Step (2)



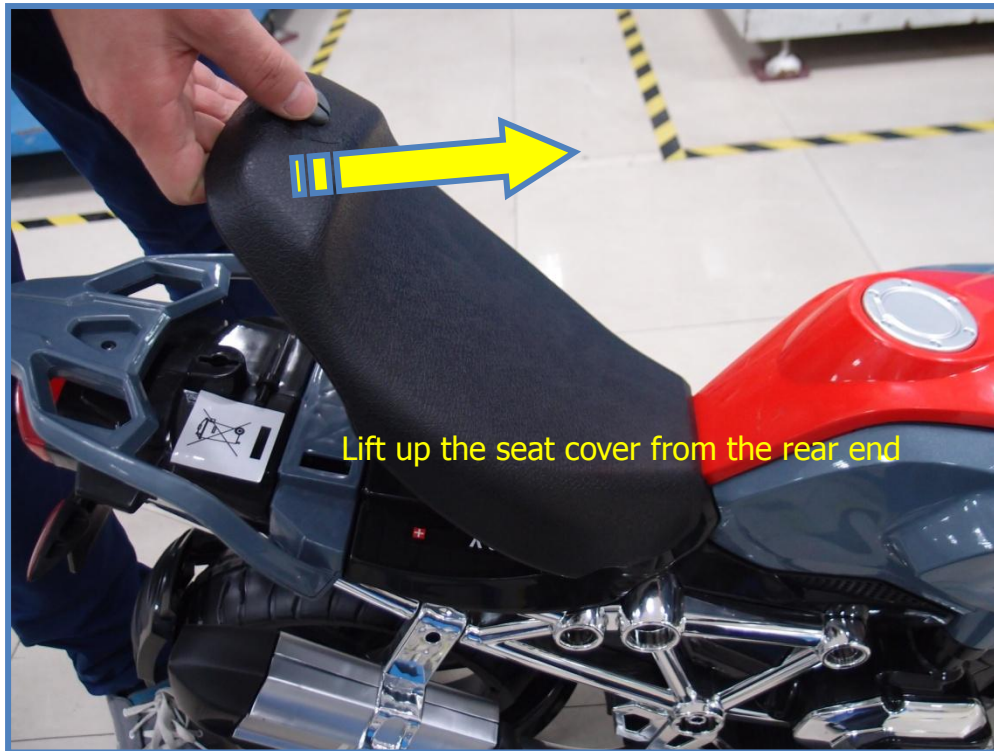
Unlock position

Customer Service Guide



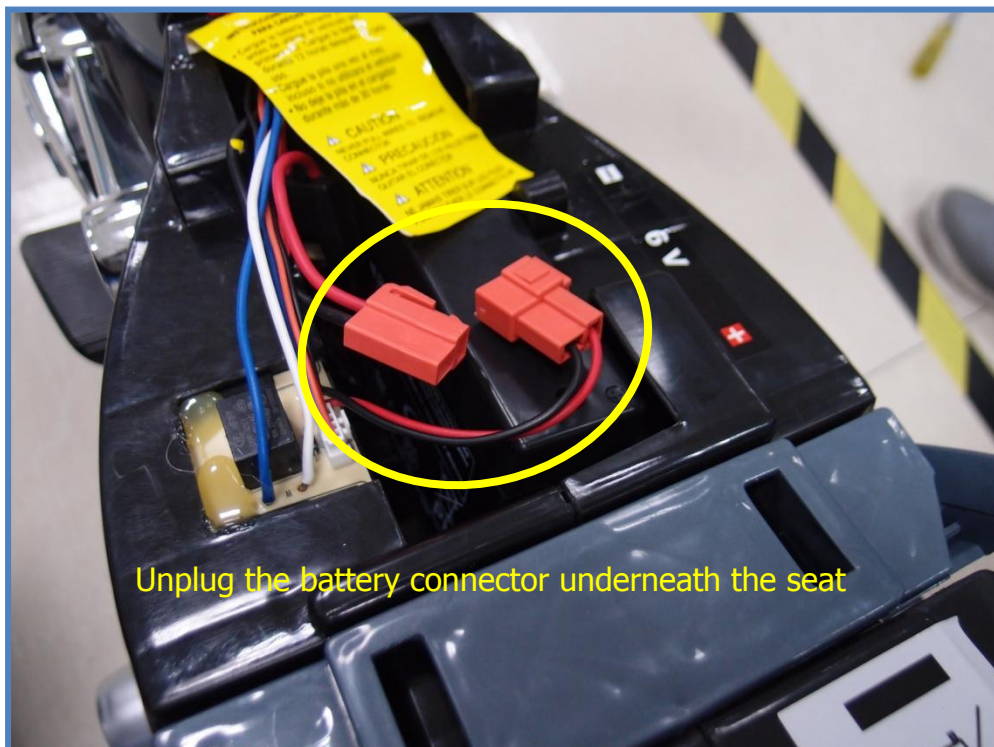
I) Check Battery

Step (3)



Lift up the seat cover from the rear end

Step (4)



Unplug the battery connector underneath the seat

Customer Service Guide



I) Check Battery

Step
(5)



Reading Judgment: 6.0 V ~ 6.5 V – Good condition

5.6 V ~ 5.9 V – Recharge battery

5.5 V – Recharge battery. If after the stipulated recharging time the voltage has not increased, then replace the battery.

Below 5.5 V – Replace the battery.

Customer Service Guide



II) Check Wiring Connection

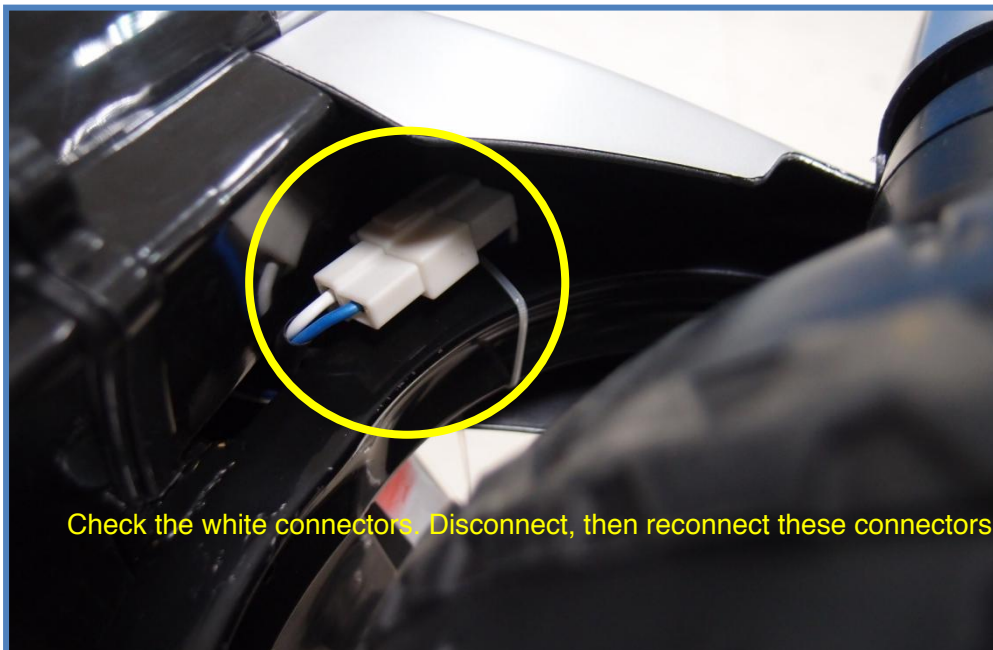
Operation: There are two wiring connections that should be checked.

A. Motor/Gearbox : Turn over the vehicle and locate the Gearbox harness at the bottom.

Step (1)



Step (2)



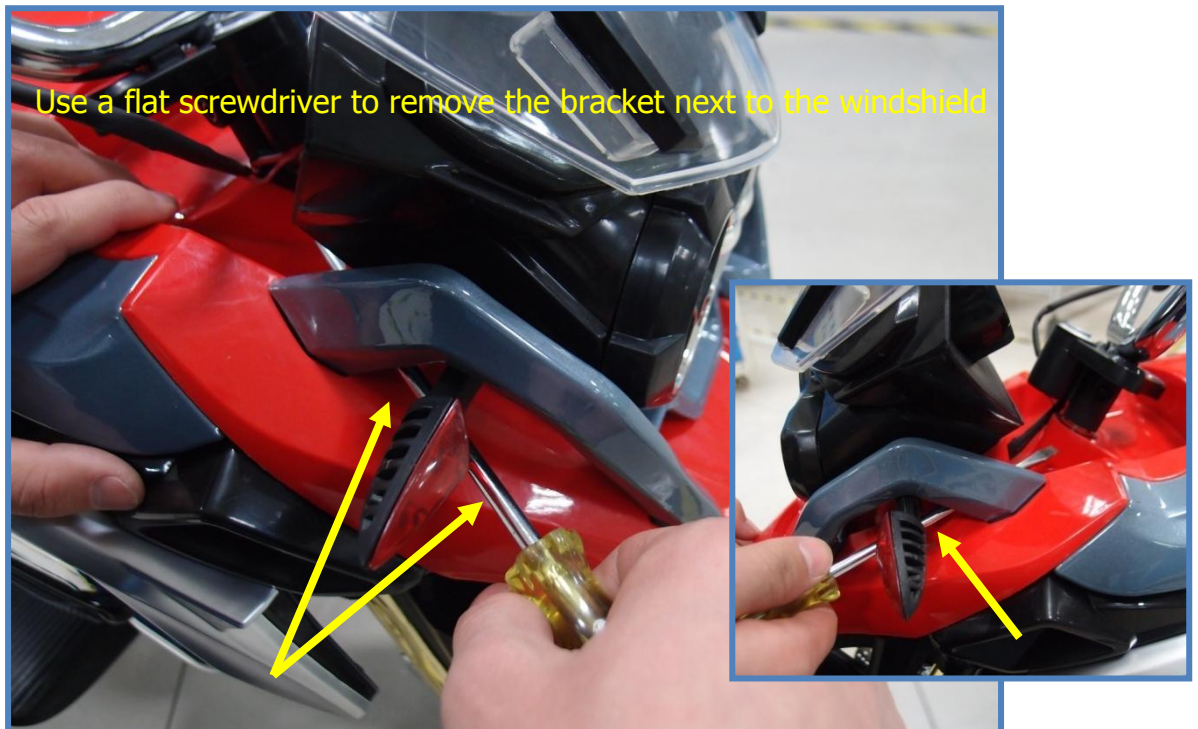
Customer Service Guide



II) Check Wiring Connection

B. Handlebar/Sounds : Disassemble the windshield and check the two connections per the below procedures.

Step (1)



Step (2)



Customer Service Guide



II) Check Wiring Connection

Step (3)



Step (4)



Reverse the above procedures to reassemble the vehicle.

Customer Service Guide



III) Windshield Replacement

Operation: Follow the procedure (IIb) to detach the windshield, and then unplug the two connectors to remove it completely for replacing.



Reverse above procedures to re-assemble the vehicle

Customer Service Guide



IV) Gearbox Replacement

Operation: Follow below steps to replace the gearbox.

Step (1)



Use the two plastic wrenches to remove the nuts at both sides

Step (2)



Unscrew the motor cover on the left side of rear wheel.

Customer Service Guide



IV) Gearbox Replacement

Step (3)



Hold and pull out the motor cover as shown.

Step (4)



There are two latches help to hold the cover in place

Customer Service Guide



IV) Gearbox Replacement

Step (5)



Slide the rear axle out from the opposite side of the gearbox. There is no need to remove it completely, just enough to release the gearbox.

Step (6)



Remove the gearbox from the rear wheel assembly.

Customer Service Guide



IV) Gearbox Replacement

Step (7)



Step (8)



Reverse above procedures to re-assemble the vehicle

Customer Service Guide



V) Warning Stickers

Operation: Check and re-put the damaged warning stickers after repairing.

- (1) Bottom side of car body (underneath of rear fender)



WARNING

PREVENT INJURIES AND DEATH:

- **NEVER LEAVE CHILD UNATTENDED.**
- Direct adult supervision is **REQUIRED.**
- **NEVER** use in roadways, near cars, on or near steep inclines or steps, swimming pools or other bodies of water.
- **ALWAYS** wear shoes • **ALWAYS** sit on seat • **ONLY** 1 rider at a time.



For questions or comments please call 1-888-982-9309
or visit our website at www.rollplay.com

Customer Service Guide



V) Warning Stickers

(2) Bottom side of Seat



WARNING

- Batteries can fall out and injure a child if vehicle tips over. Always be sure the battery bracket is properly assembled over battery.

PREVENT FIRE

- Never modify the electrical system. Alterations could cause a fire.
- Use of the wrong type battery or charger could cause a fire or explosion.

“This device complies with part 15 of the FCC Rules. Operation is subject to the following two conditions: (1) This device may not cause harmful interference, and (2) this device must accept any interference received, including interference that may cause undesired operation.”

Customer Service Guide



V) Warning Stickers

(3) Battery harness

IMPORTANT CHARGING INSTRUCTIONS

- Charge the battery for 24 hours before using the vehicle for the first time. Charge the battery for 12 hours after each use.
- Charge the battery once a month, even if you are not using your vehicle.
- Do not leave the battery on the charger for more than 30hrs.

RENSEIGNEMENTS IMPORTANTS CONCERNANT LA CHARGE

- Charger la batterie pendant 24 heures avant de conduire le véhicule pour la première fois. Charger la batterie pendant 12 heures après chaque utilisation
- Charger la batterie au moins une fois par mois, même si le jouet n'est pas utilisé.
- Ne pas laisser la batterie branchée au chargeur pendant plus de 30 heures.

INSTRUCCIONES IMPORTANTES PARA CARGAR LA PILA

- Cargue la batería durante 24 horas antes de utilizar el vehículo por primera vez. Cargue la batería durante 12 horas después de cada uso.
- Cargue la pila una vez al mes, incluso si no utilizara el vehículo.
- No deje la pila en el cargador durante más de 30 horas.

⚠ CAUTION

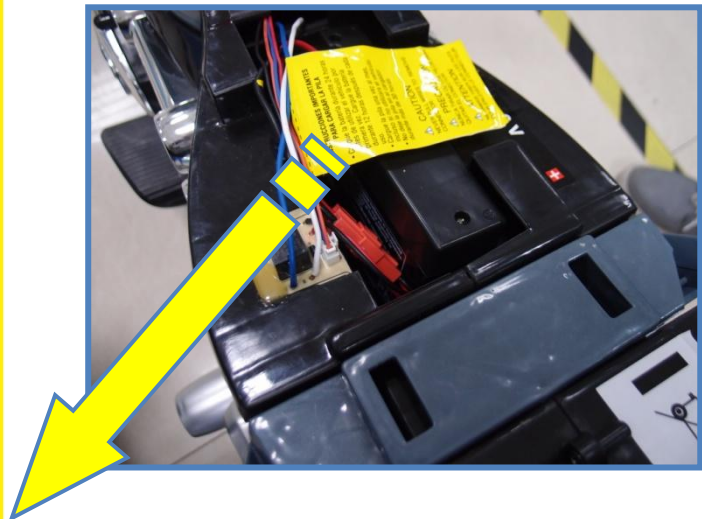
NEVER PULL WIRES TO REMOVE CONNECTOR

⚠ PRECAUCIÓN

NUNCA TIRAR DE LOS HILOS PARA QUITAR EL CONECTOR

⚠ ATTENTION

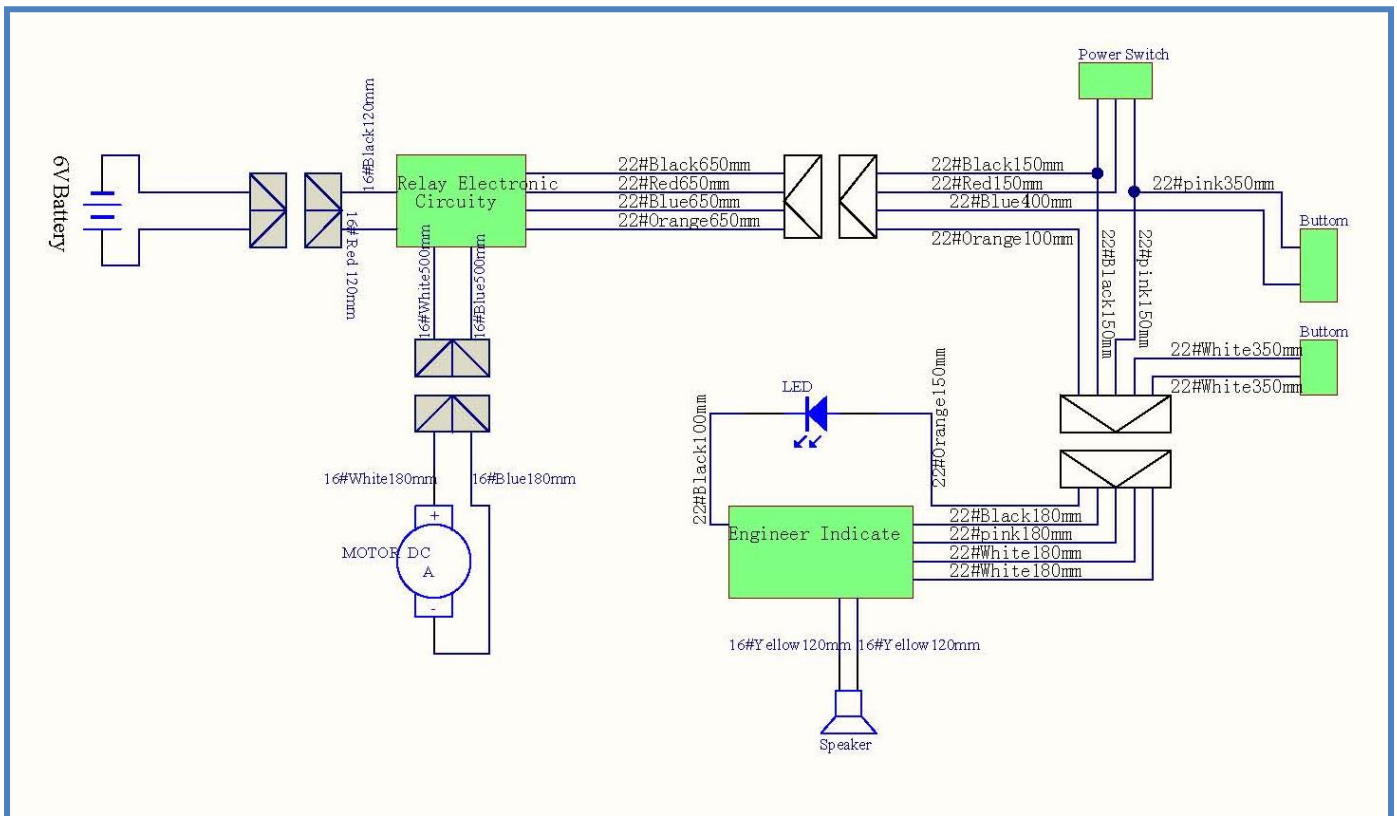
NE JAMAIS TIRER SUR LES FILES POUR ENLEVER LE CONNECTEUR



Customer Service Guide



VI) Wiring Schematic



Customer Service Guide



VII) Exploded View

