



# 6V Chevy or GMC Pick Up (W460) Customer Service Guide



# Customer Service Guide



## Contents

I) Check Battery .....	3
II) Check Wiring Condition .....	6
III) Check Foot Pedal .....	13
IV) Gearbox Replacement .....	15
V) Warning Stickers .....	22
VI) Schematic diagram .....	28
VII) Exploded View .....	29

**CAUTION :**  
Disconnect the battery before proceeding.

# Customer Service Guide



## I) Check Battery

Operation: Use a Flat head screwdriver to unlock and remove the seat. Locate the battery harness, unplug the connector then use a volt-meter to check battery condition.

Step (1)



Step (2)



# Customer Service Guide



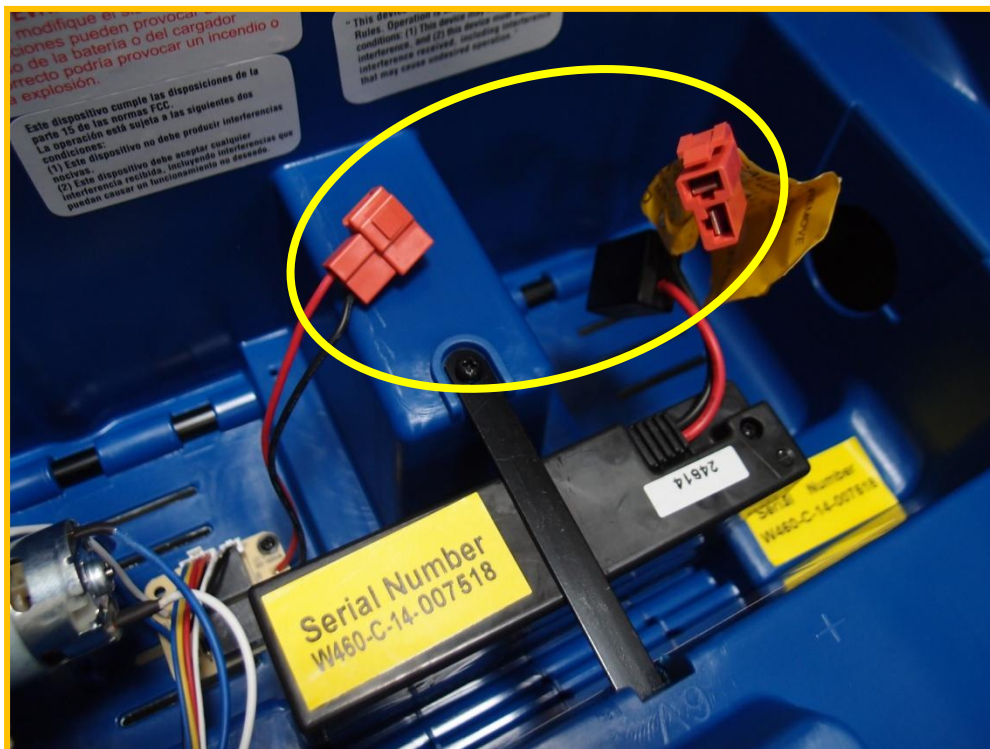
## I) Check Battery

Step (3)



Unplug the battery connector (RED) underneath seat

Step (4)



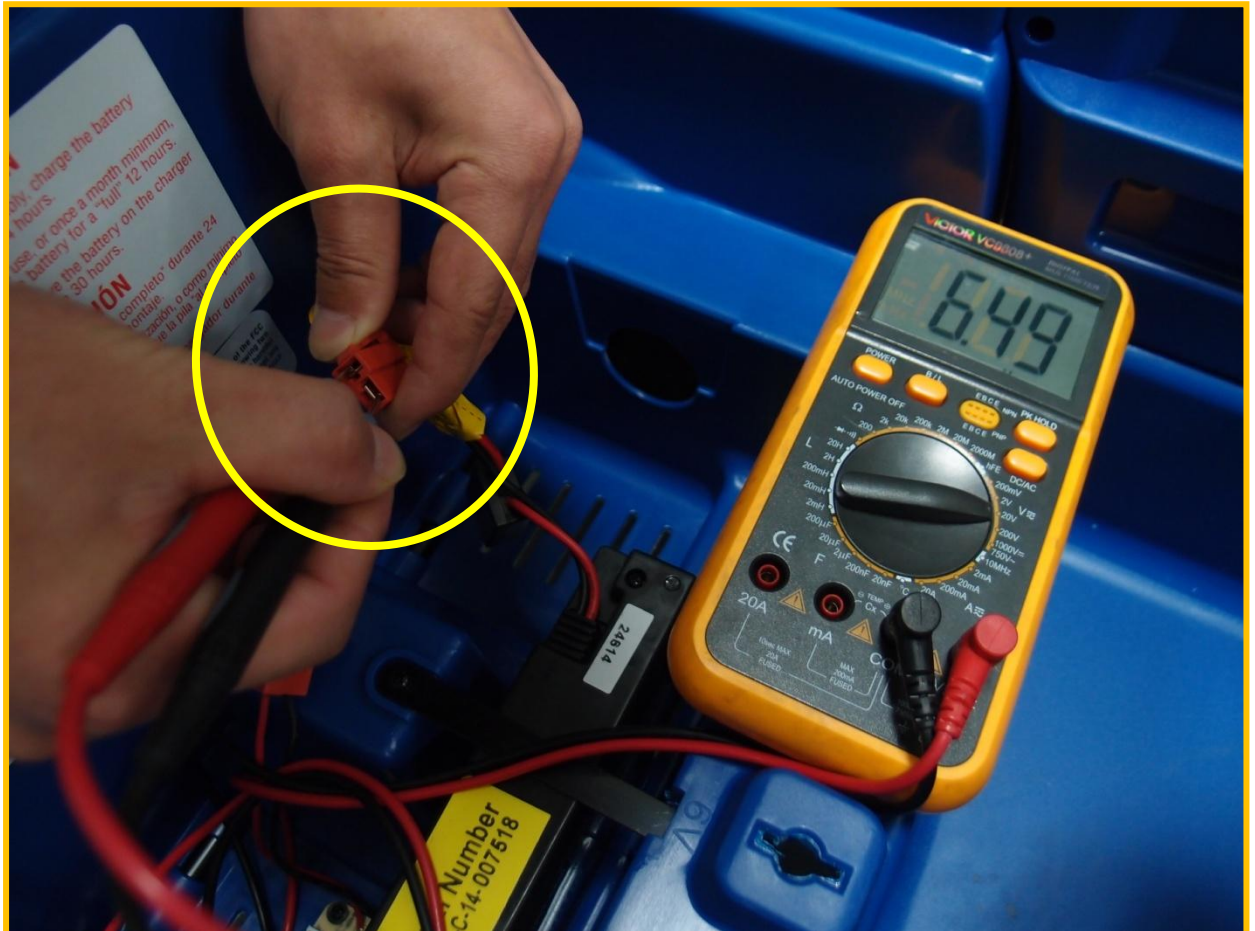


# Customer Service Guide



## I) Check Battery

Step  
(5)



Reading Judgment: 6.0 V ~ 6.6 V – Good condition

5.6 V ~ 5.9 V – Proceed to Recharge

5.5 V – Battery to be recharged. If after the stipulated recharging time, voltage has not increased, the Battery needs replacement

Below 5.5 V – Battery needs replacement

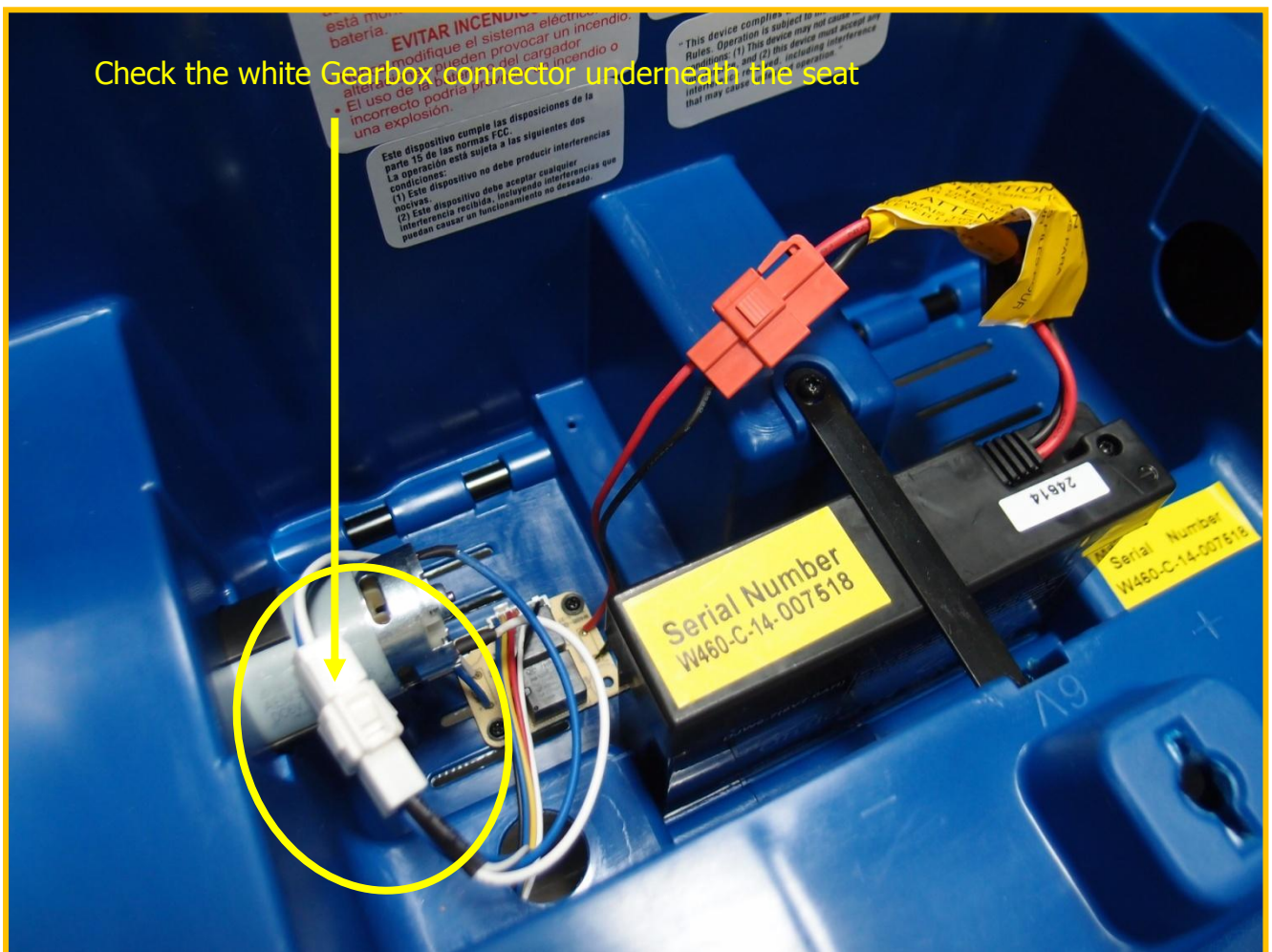
# Customer Service Guide



## II) Check Wiring Connection

Operation: There are two positions of connections should be checked.

- A. Motor/Gearbox : Follow above (Point I) to remove the seat, locate the Gearbox harness underneath.



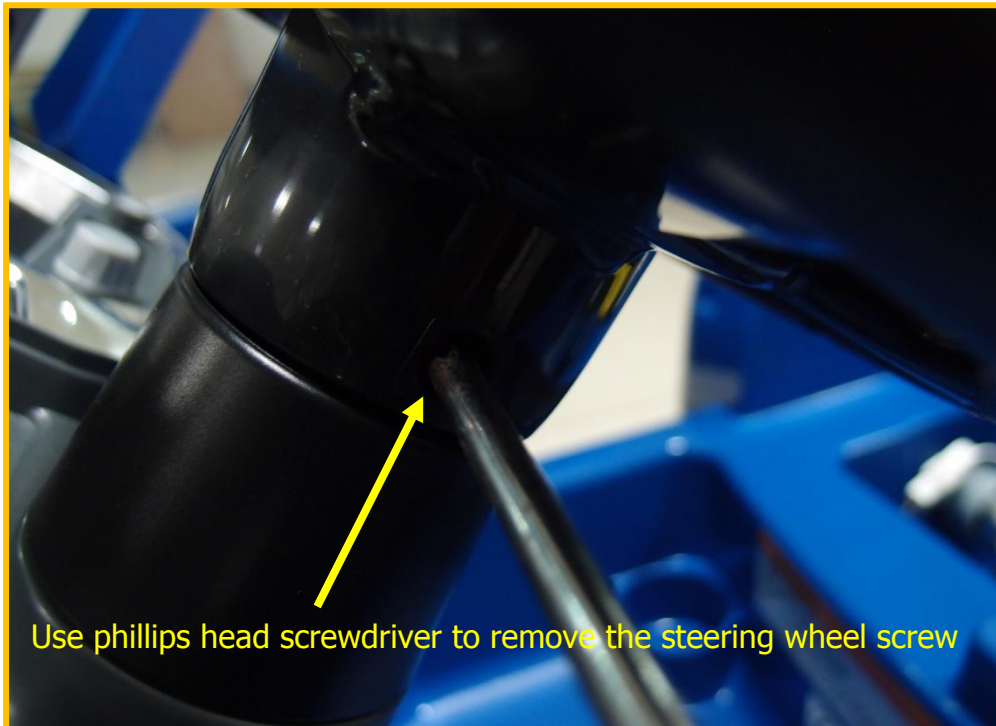
# Customer Service Guide



## II) Check Wiring Connection

B. Other Connections : Access the circuitry inside Dashboard assembly to check other wiring connections.

Step (1)



Step (2)



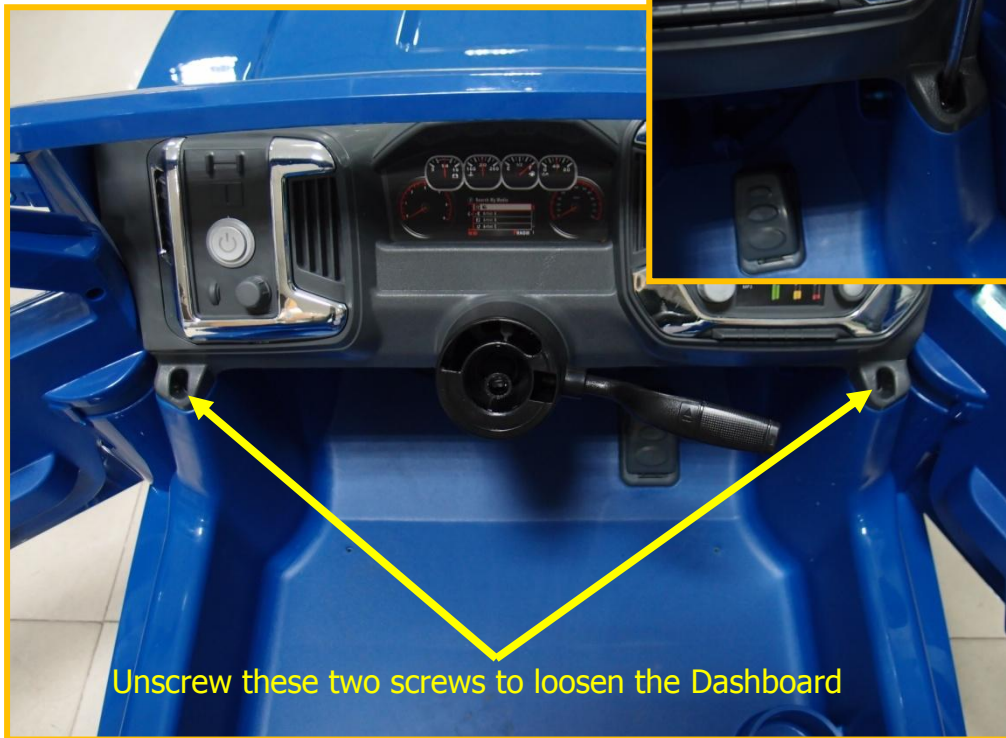


# Customer Service Guide

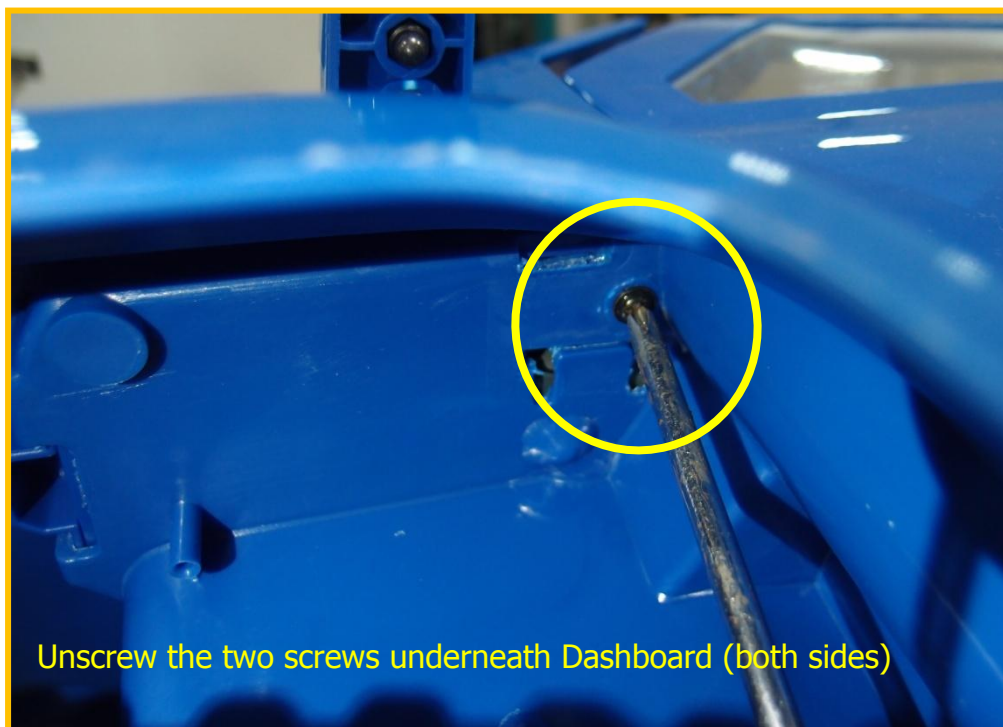


## II) Check Wiring Connection

Step (3)



Step (4)





# Customer Service Guide



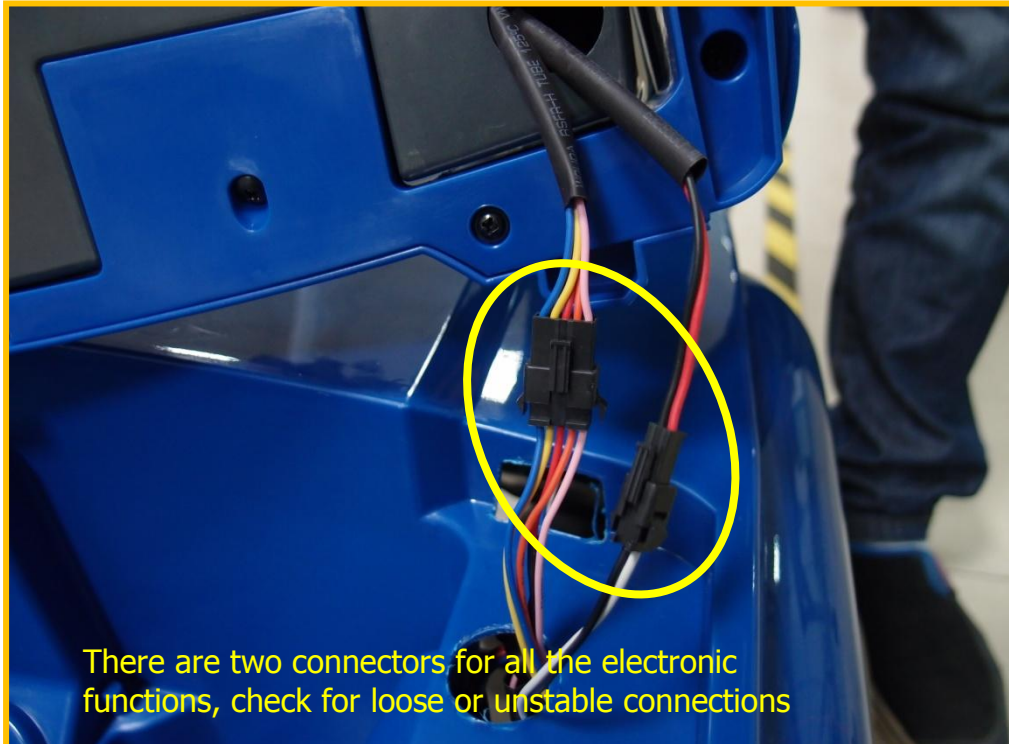
## II) Check Wiring Connection

Step (5)



Lift the Dashboard and windshield out together, then access the connectors

Step (6)



There are two connectors for all the electronic functions, check for loose or unstable connections

If problem is solved, reverse above steps to re-assemble the vehicle. If not, unplug the connectors and continue to check the wiring inside Dashboard.

# Customer Service Guide



## II) Check Wiring Connection

Step (7)



Step (8)

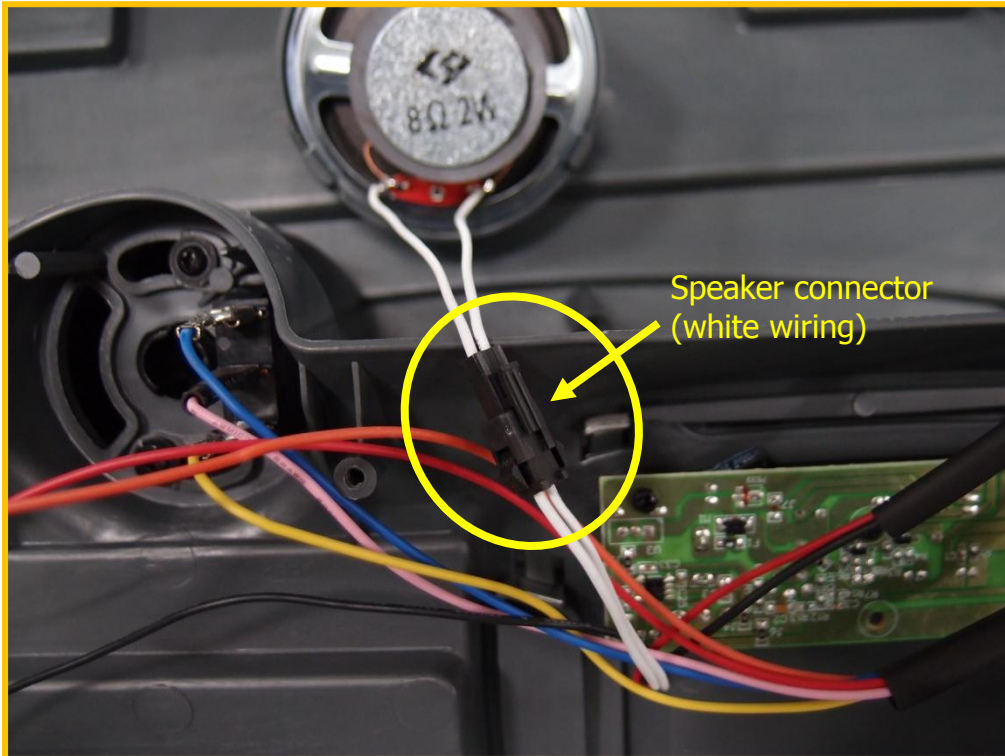


# Customer Service Guide



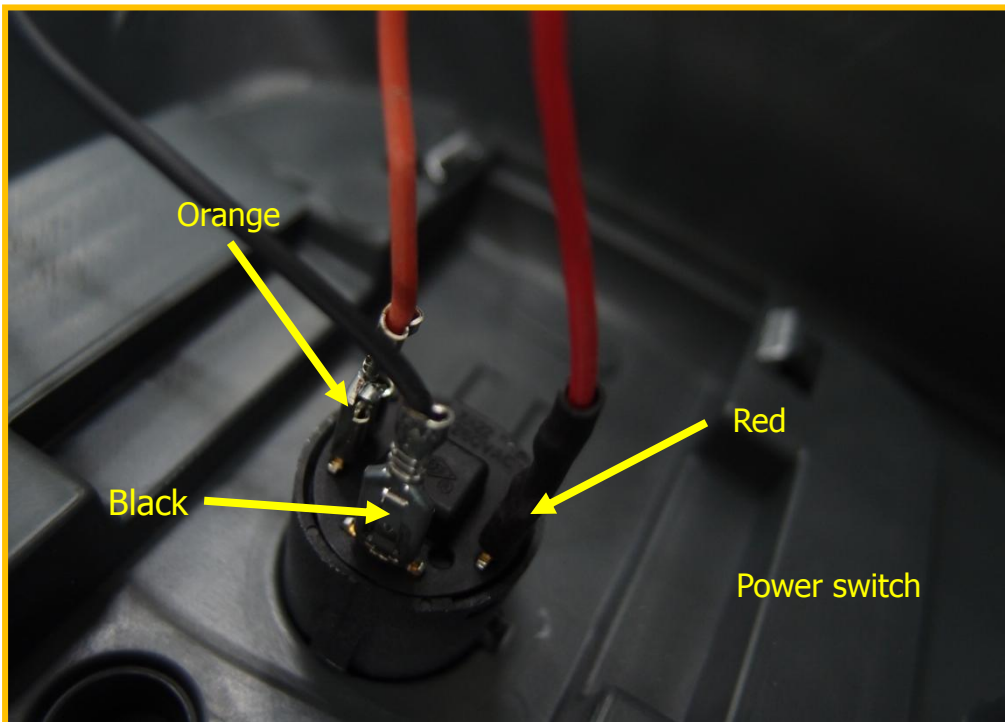
## II) Check Wiring Connection

Step (9)



Speaker connector  
(white wiring)

Step (10)



Orange

Red

Black

Power switch

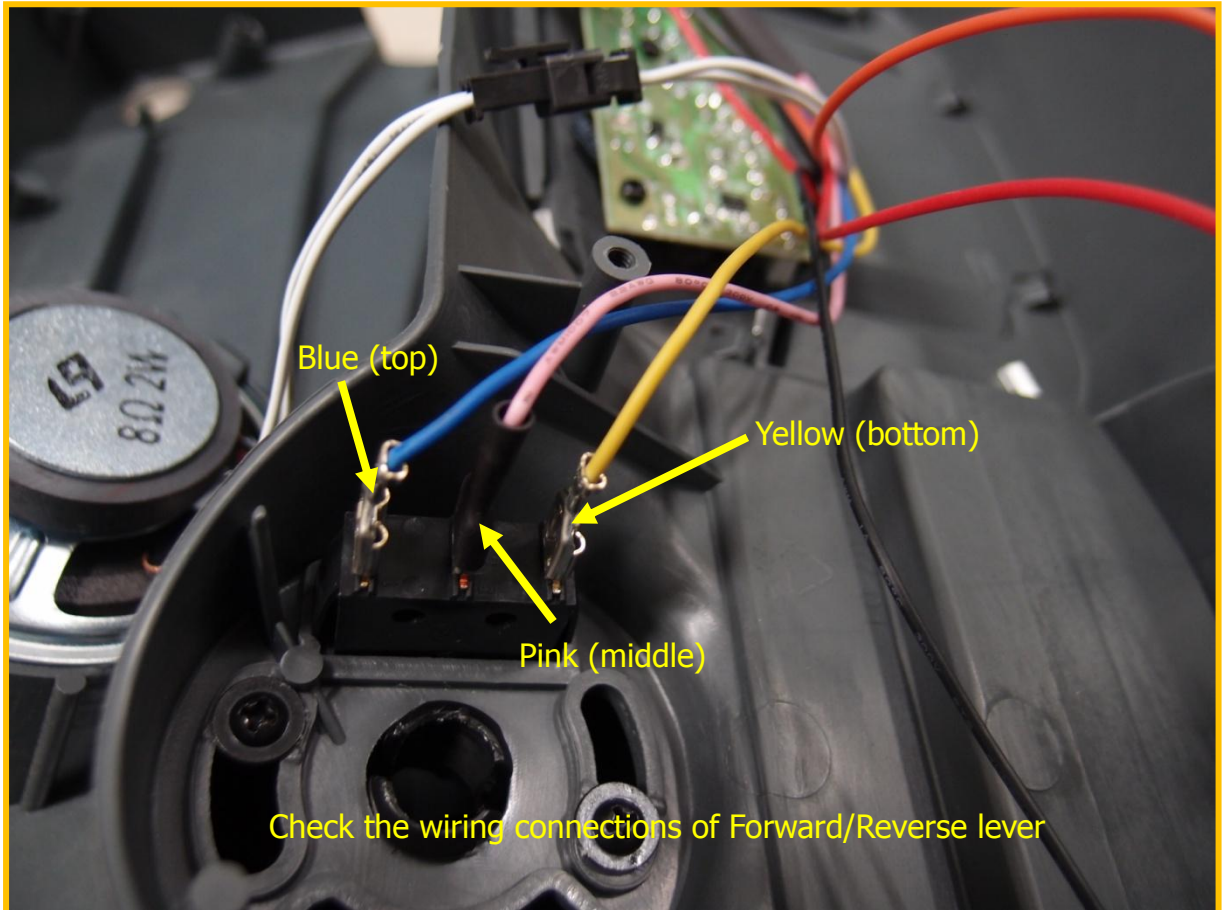


# Customer Service Guide



## II) Check Wiring Connection

Step  
(11)



Reverse above procedures to re-assemble the vehicle

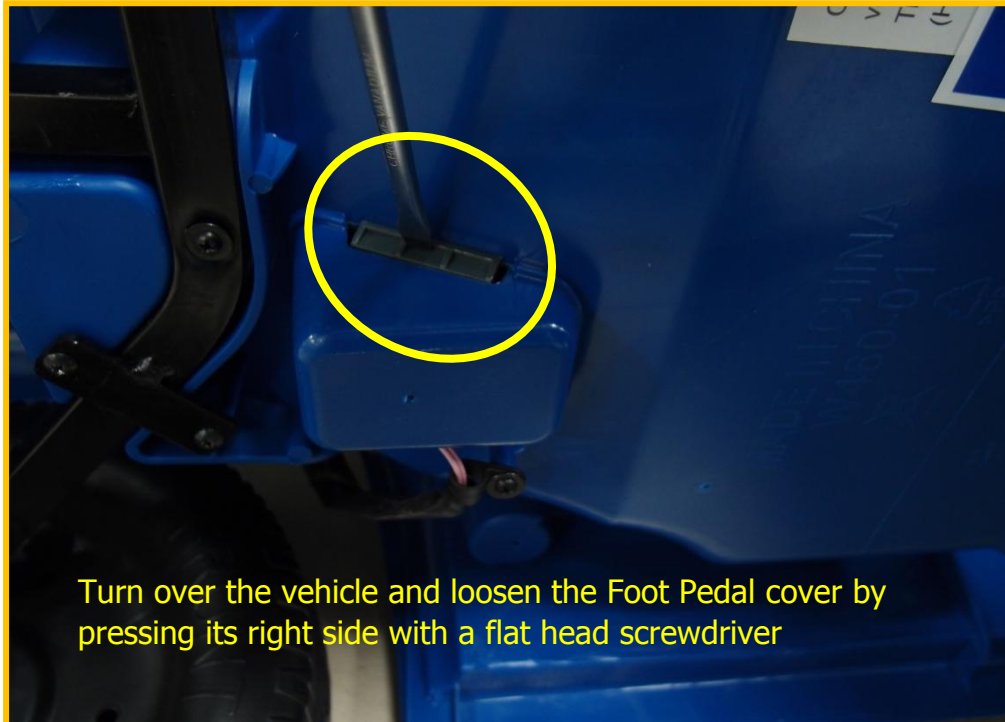
# Customer Service Guide



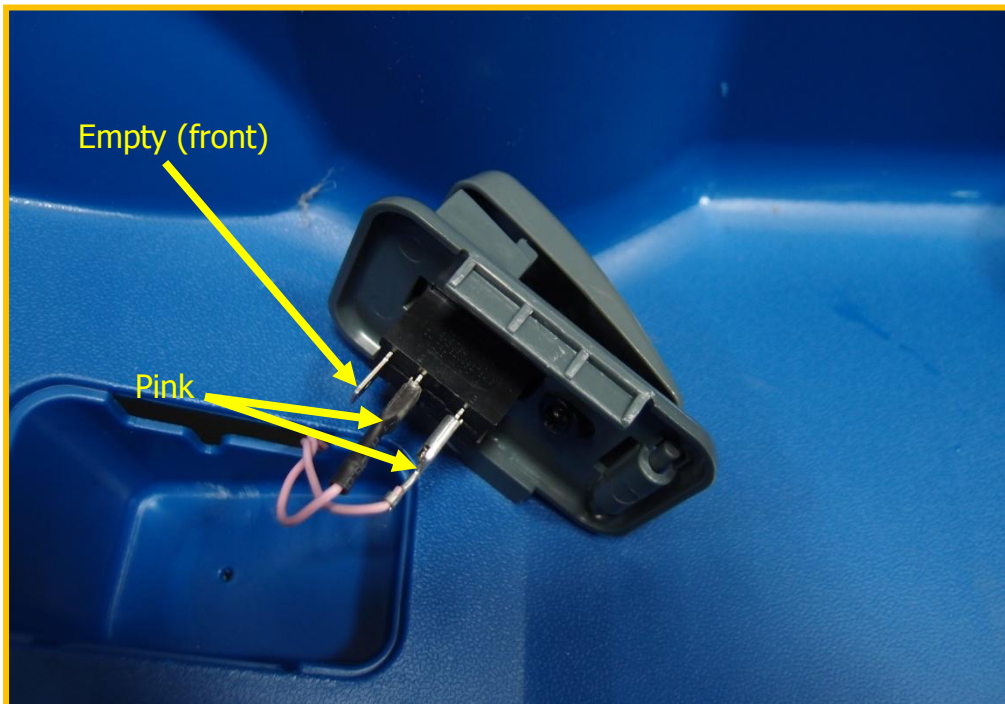
## III) Check Foot Pedal

Operation: Follow below procedures to check the Foot Pedal connection.

Step (1)



Step (2)



# Customer Service Guide



## III) Check Foot Pedal

Step  
(3)





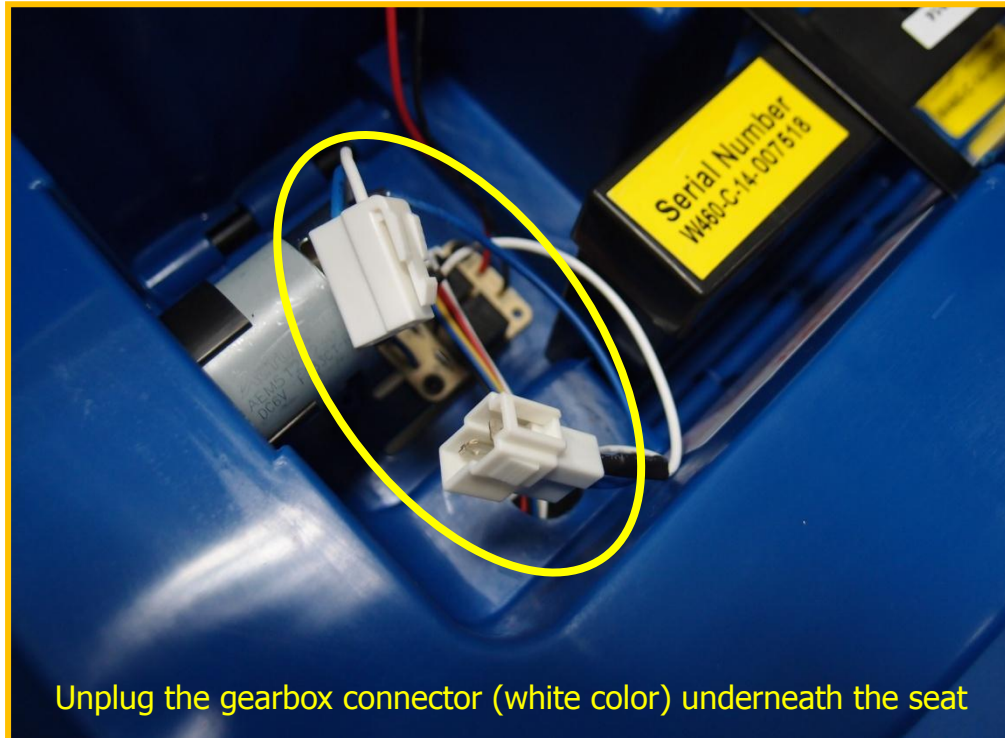
# Customer Service Guide



## IV) Gearbox Replacement

Operation: Follow below steps to take apart the gearbox completely for replacing.

Step (1)



Step (2)



# Customer Service Guide

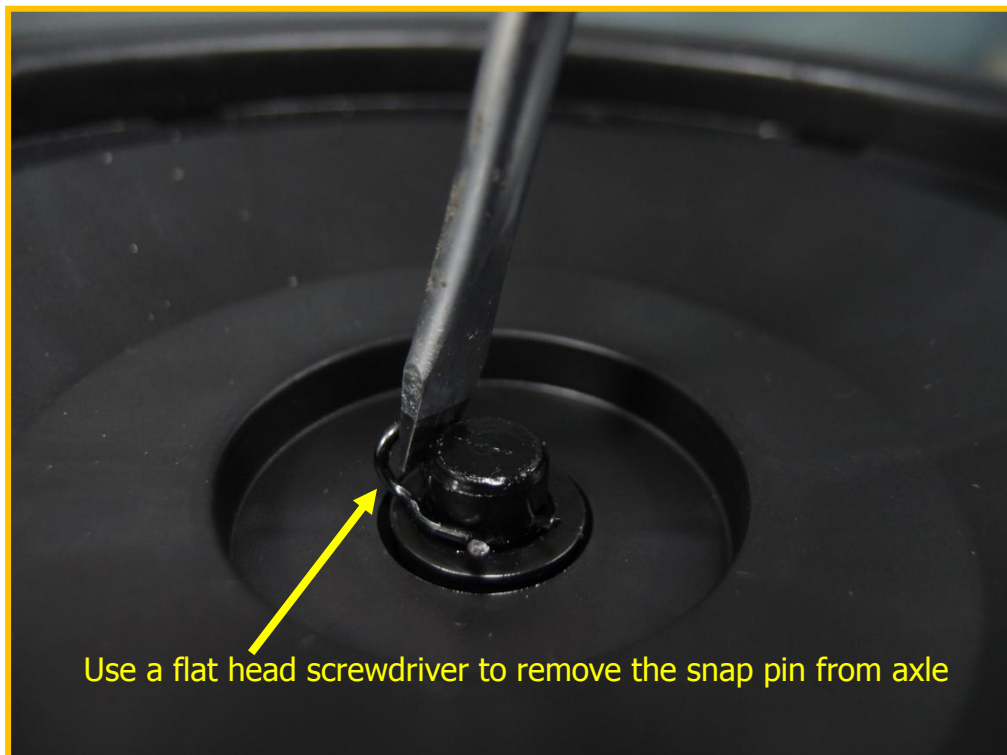


## IV) Gearbox Replacement

Step (3)



Step (4)



# Customer Service Guide



## IV) Gearbox Replacement

Step (5)



Step (6)



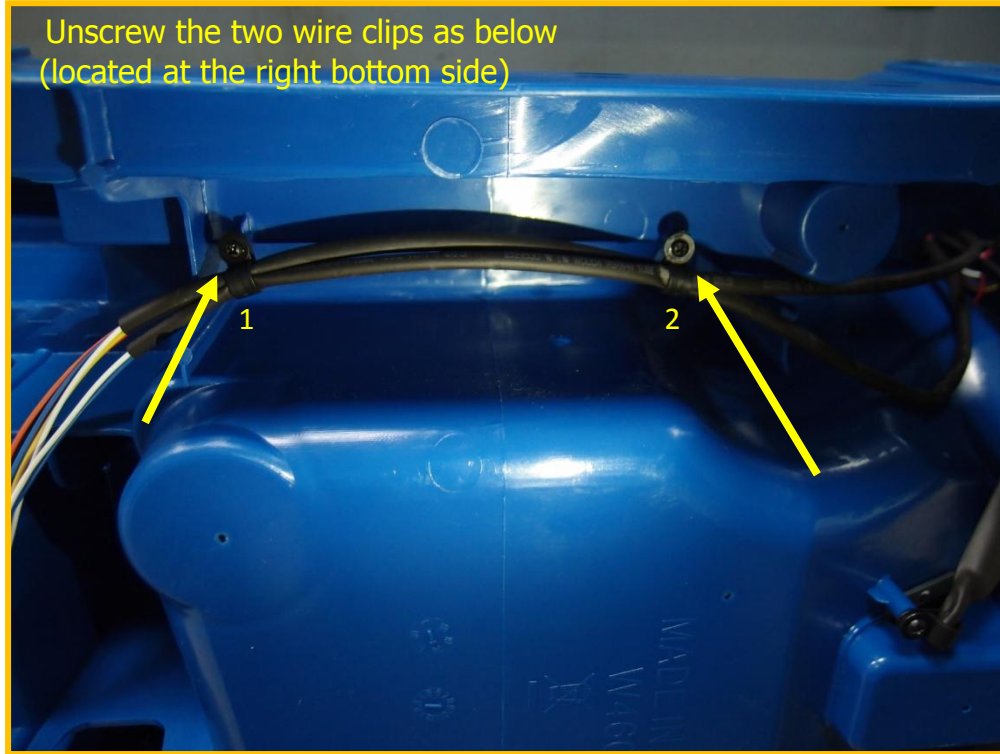


# Customer Service Guide

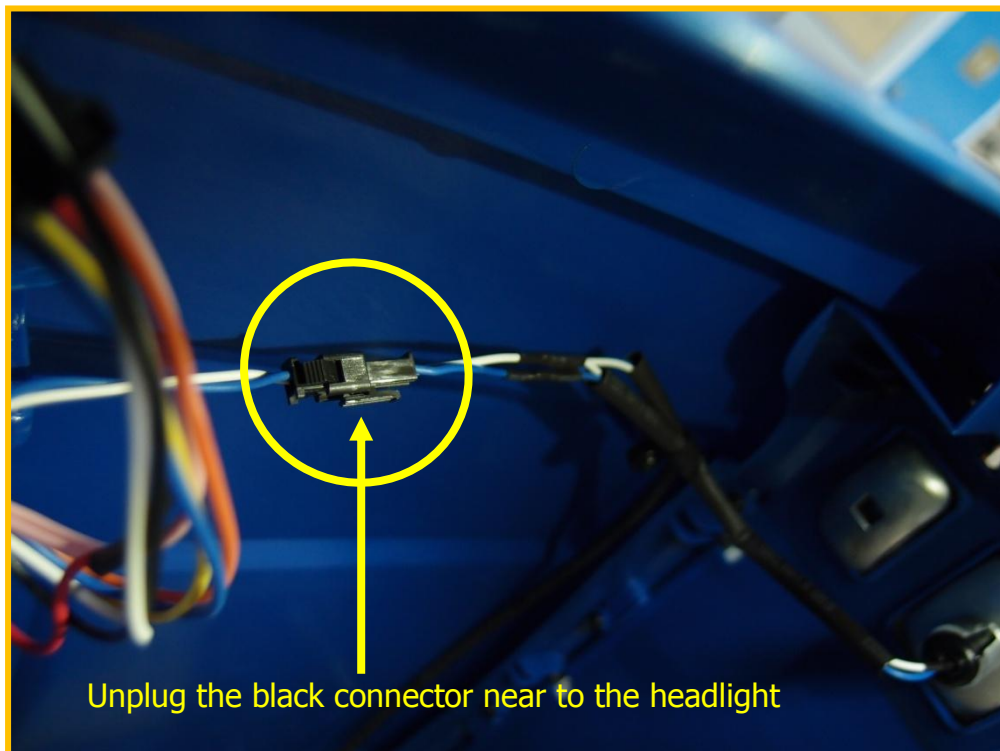


## IV) Gearbox Replacement

Step (7)



Step (8)



# Customer Service Guide



## IV) Gearbox Replacement

Step (9)



Step (10)



# Customer Service Guide

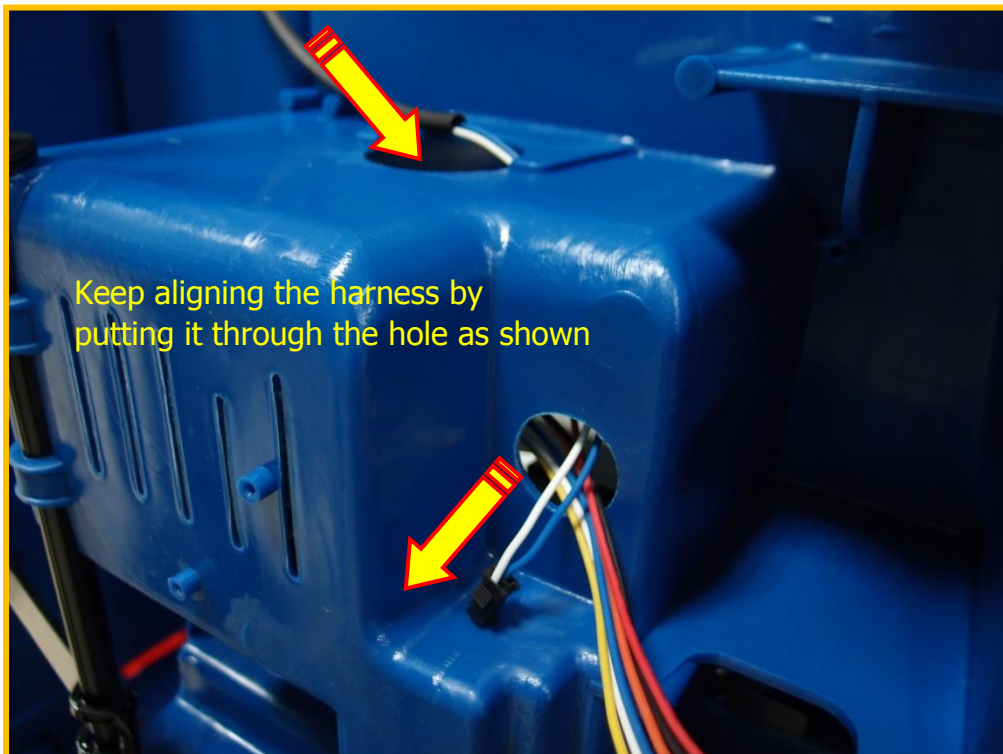


## IV) Gearbox Replacement

Step (11)



Step (12)



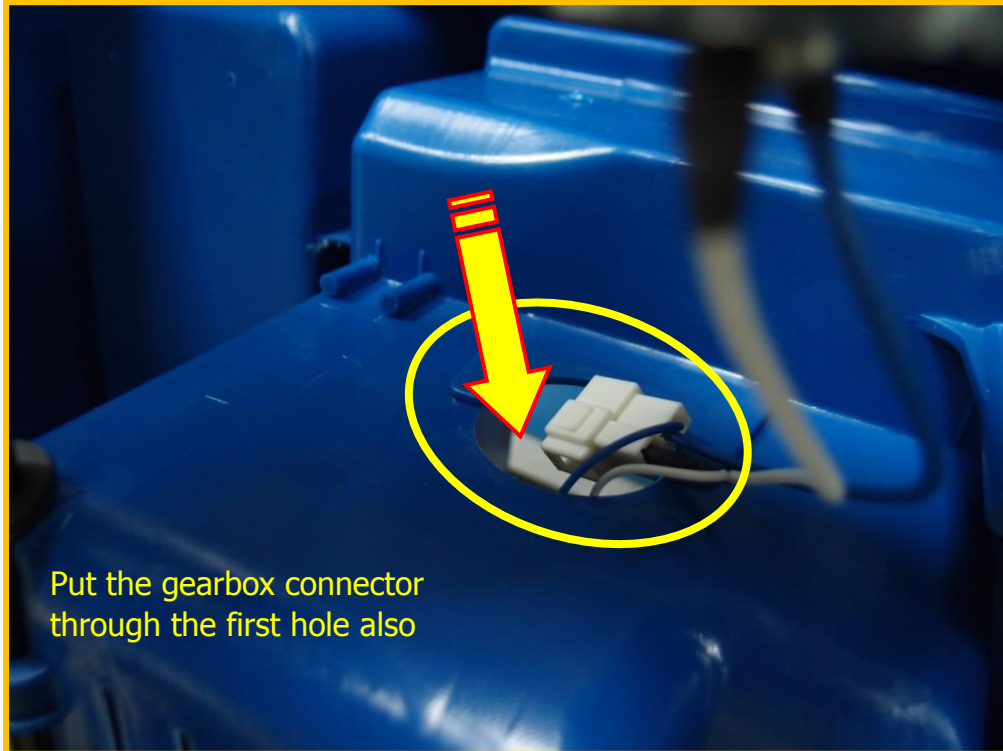


# Customer Service Guide

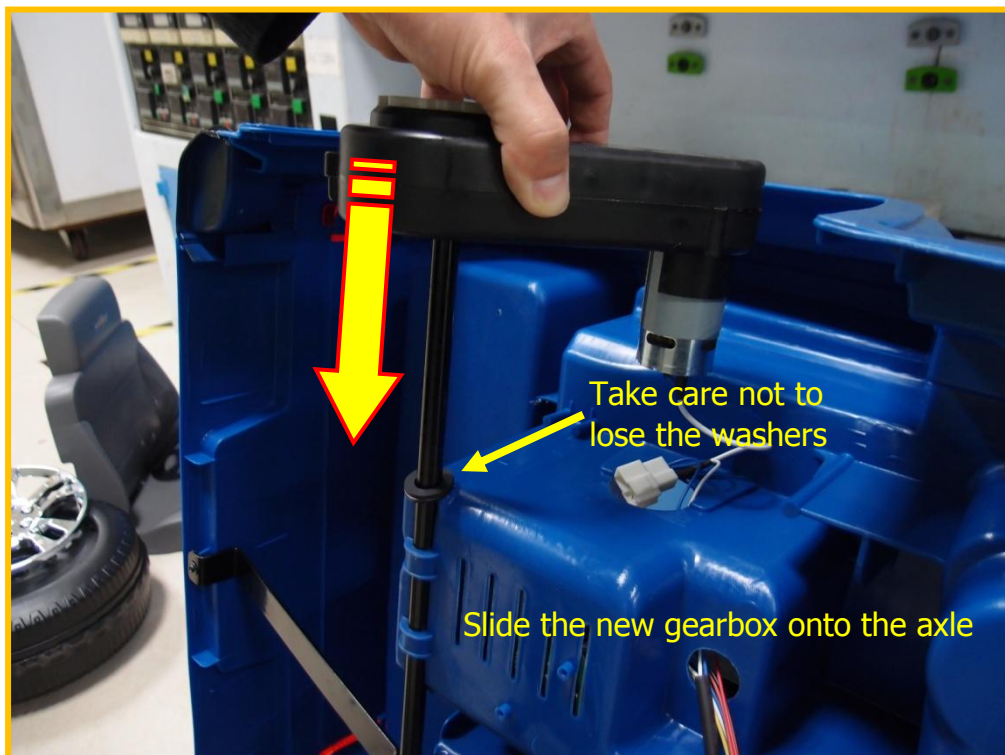


## IV) Gearbox Replacement

Step (13)



Step (14)



Reverse above other procedures to re-assemble the vehicle

# Customer Service Guide



## V) Warning Stickers

Operation: Check and re-put the damaged warning stickers after repairing.

### (1) Behind the seat



**⚠ WARNING**

- Batteries can fall out and injure a child if vehicle tips over. Always be sure the battery bracket is properly assembled over battery.

**PREVENT FIRE**

- Never modify the electrical system. Alterations could cause a fire.
- Use of the wrong type battery or charger could cause a fire or explosion.

**⚠ ADVERTENCIA**

- Las baterías pueden caerse y lesionar al niño si el vehículo se volca. Siempre asegúrese de que el soporte de la batería está montada correctamente sobre la batería.

**EVITAR INCENDIOS**

- Nunca modifique el sistema eléctrico. Las alteraciones pueden provocar un incendio.
- El uso de la batería o del cargador incorrecto podría provocar un incendio o una explosión.

**⚠ CAUTION**

- Prior to assembly, charge the battery for a "full" 24 hours.
- After each use, or once a month minimum, charge the battery for a "full" 12 hours.
- **DO NOT** leave the battery on the charger for more than 30 hours.

**⚠ ATENCIÓN**

- Cargue la pila "al completo" durante 24 horas antes del montaje.
- Después de cada utilización, o como mínimo una vez al mes, cargue la pila "al completo" durante 12 horas.
- **NO DEJE** la pila en el cargador durante más de 30 horas.



# Customer Service Guide



## V) Warning Stickers

### (1) Behind the seat



Este dispositivo cumple las disposiciones de la parte 15 de las normas FCC.  
La operación está sujeta a las siguientes dos condiciones:

- (1) Este dispositivo no debe producir interferencias nocivas.
- (2) Este dispositivo debe aceptar cualquier interferencia recibida, incluyendo interferencias que puedan causar un funcionamiento no deseado.

“This device complies with part 15 of the FCC Rules. Operation is subject to the following two conditions: (1) This device may not cause harmful interference, and (2) this device must accept any interference received, including interference that may cause undesired operation.”



# Customer Service Guide



## V) Warning Stickers

### (2) Below the seat



## ¡ADVERTENCIA!

**EVITE LESIONES Y PELIGROS FATALES: •NUNCA DEJE SOLO AL NIÑO.**

- Es **NECESARIA** la vigilancia directa de un adulto.
- No permita **NUNCA** que se use en la calle, en las proximidades del tránsito de vehículos, en cuevas pronunciadas o sobre peldaños, ni cerca de piscinas (albercas) u otras acumulaciones de agua. • El niño **SIEMPRE** debe usar zapatos.
- **SIEMPRE** siéntese en el asiento • **SOLO** 1 jinete a la vez.

# Customer Service Guide



## V) Warning Stickers



(2) Below the seat



**CHILD UNATTENDED.**  
Supervision is **REQUIRED.**  
Avoid use on roads, pathways, near cars, on or near steep inclines or steps,  
near pools, ponds, or other bodies of water.  
Always wear your seat belt and shoes • **ALWAYS sit on seat • ONLY 1 rider at a time.**

**¡ADVERTENCIA!**  
**EVITE LESIONES Y PELIGROS FATALES.**  
• Es **NECESARIA** la vigilancia directa de un adulto.  
• No permita **NUNCA** que se use en la calle, en las aceras,  
de vehículos, en cuevas pronunciadas u otros espacios  
(albercas) u otras acumulaciones de agua. • **SIEMPRE** siéntese en el asiento • **SIEMPRE** use el cinturón de seguridad.

For questions or comments please call 888-982-9309  
or visit our website at [www.ariachild.com](http://www.ariachild.com)

 For questions or comments please call 888-982-9309  
or visit our website at [www.ariachild.com](http://www.ariachild.com) 

# Customer Service Guide



## V) Warning Stickers

(2) Below the seat



## **WARNING**

### **PREVENT INJURIES AND DEATH:**

- **NEVER LEAVE CHILD UNATTENDED.**
- Direct adult supervision is **REQUIRED.**
- **NEVER** use in roadways, near cars, on or near steep inclines or steps, swimming pools or other bodies of water.
- **ALWAYS** wear shoes • **ALWAYS** sit on seat • **ONLY** 1 rider at a time.

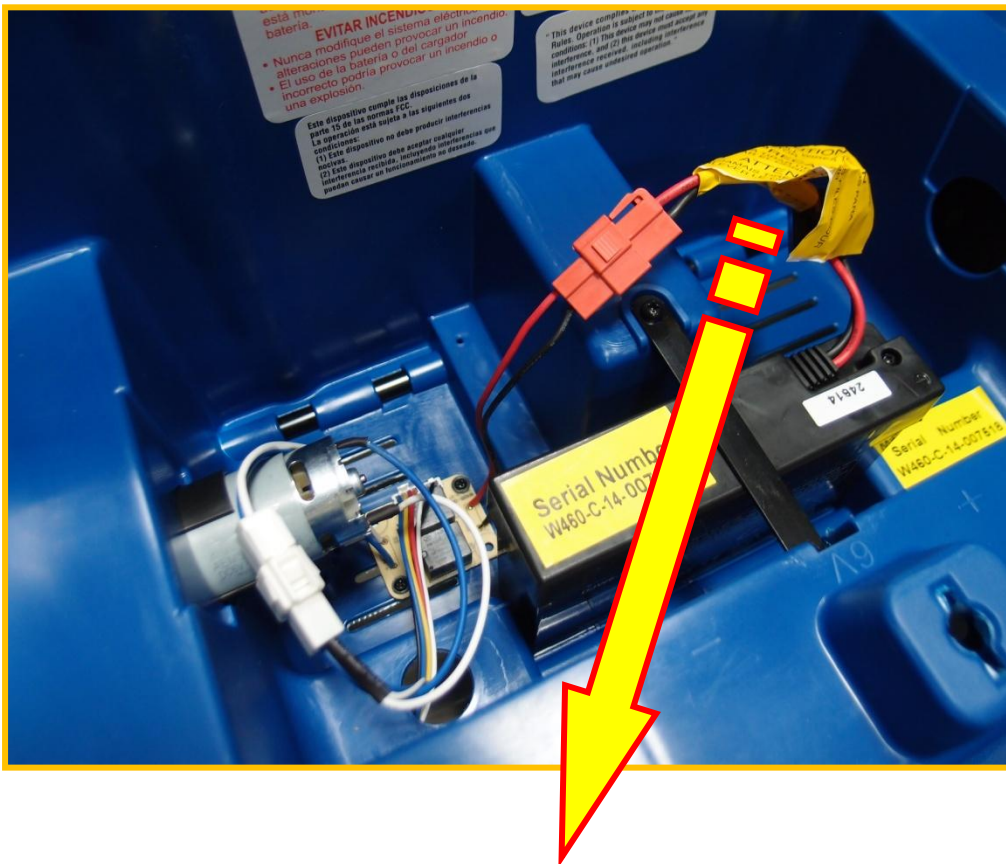


# Customer Service Guide



## V) Warning Stickers

### (3) Battery harness

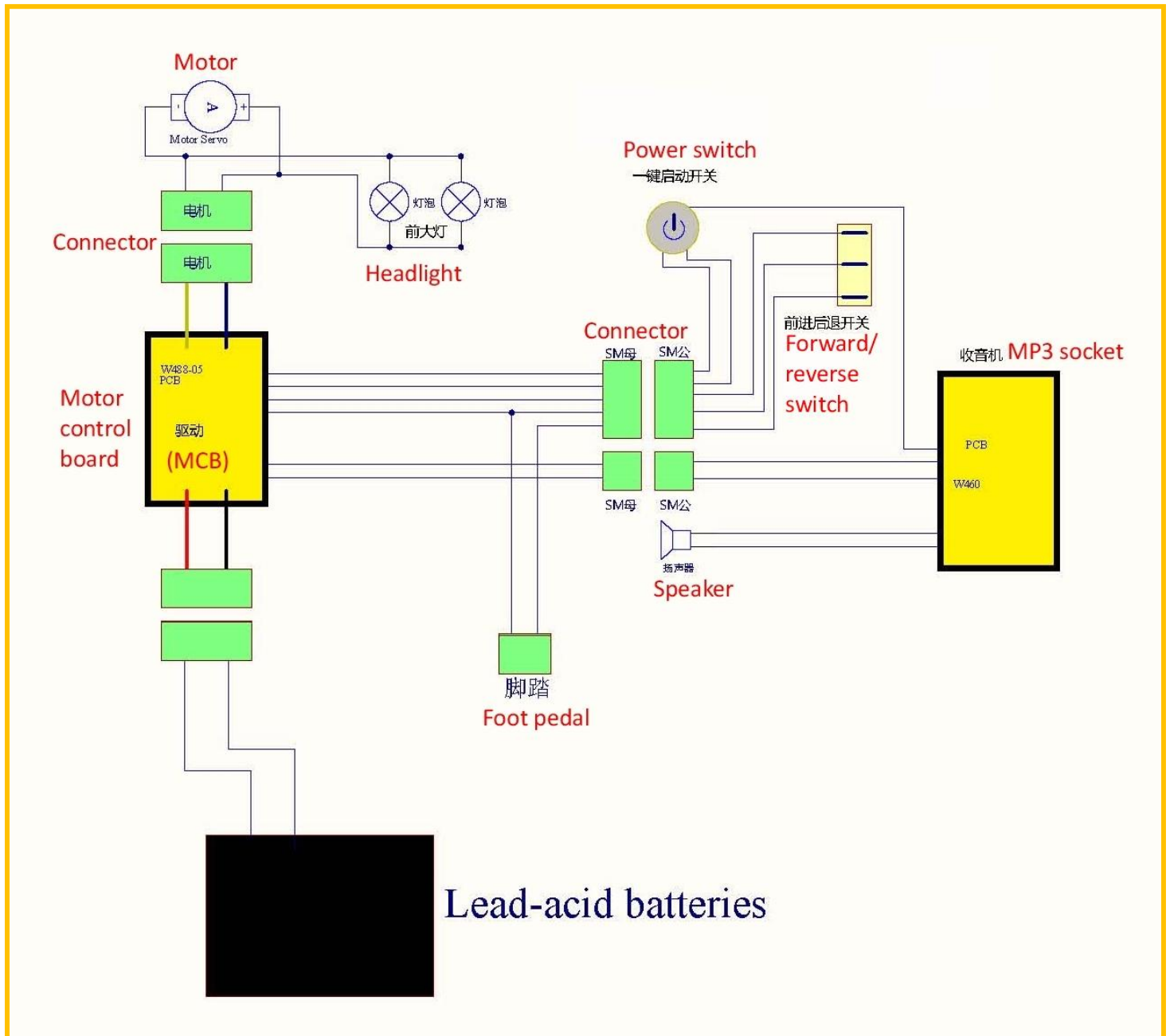


<p><b>CAUTION</b> ⚠</p> <p>NEVER PULL WIRES TO REMOVE CONNECTOR</p>	<p><b>ATTENTION</b> ⚠</p> <p>NE JAMAIS TIRER SUR LES FILS POUR ENLEVER LE CONNECTEUR</p>
<p><b>PRECAUCIÓN</b> ⚠</p> <p>NUNCA TIRAR DE LOS HILOS PARA QUITAR EL CONECTOR</p>	<p><b>PRECAUCIÓN</b> ⚠</p> <p>NUNCA TIRAR DE LOS HILOS PARA QUITAR EL CONECTOR</p>
<p><b>CAUTION</b> ⚠</p> <p>NEVER PULL WIRES TO REMOVE CONNECTOR</p>	<p><b>ATTENTION</b> ⚠</p> <p>NE JAMAIS TIRER SUR LES FILS POUR ENLEVER LE CONNECTEUR</p>

# Customer Service Guide



## VI) Wirings Schematic



# Customer Service Guide



## VII) Exploded View





# Customer Service Guide



Due to the construction and design for both items, this Service Guide is commonly used for :  
6V Chevy Silverado and 6V GMC Sierra Denali.

