



# 12V Nighthawk

## Owner's Manual and Assembly Instructions

Model #: W501-R, W501-W

Read and understand the entire manual before assembly and operation. The vehicle must be assembled by an adult who has read and understands the instructions.

Made in China.

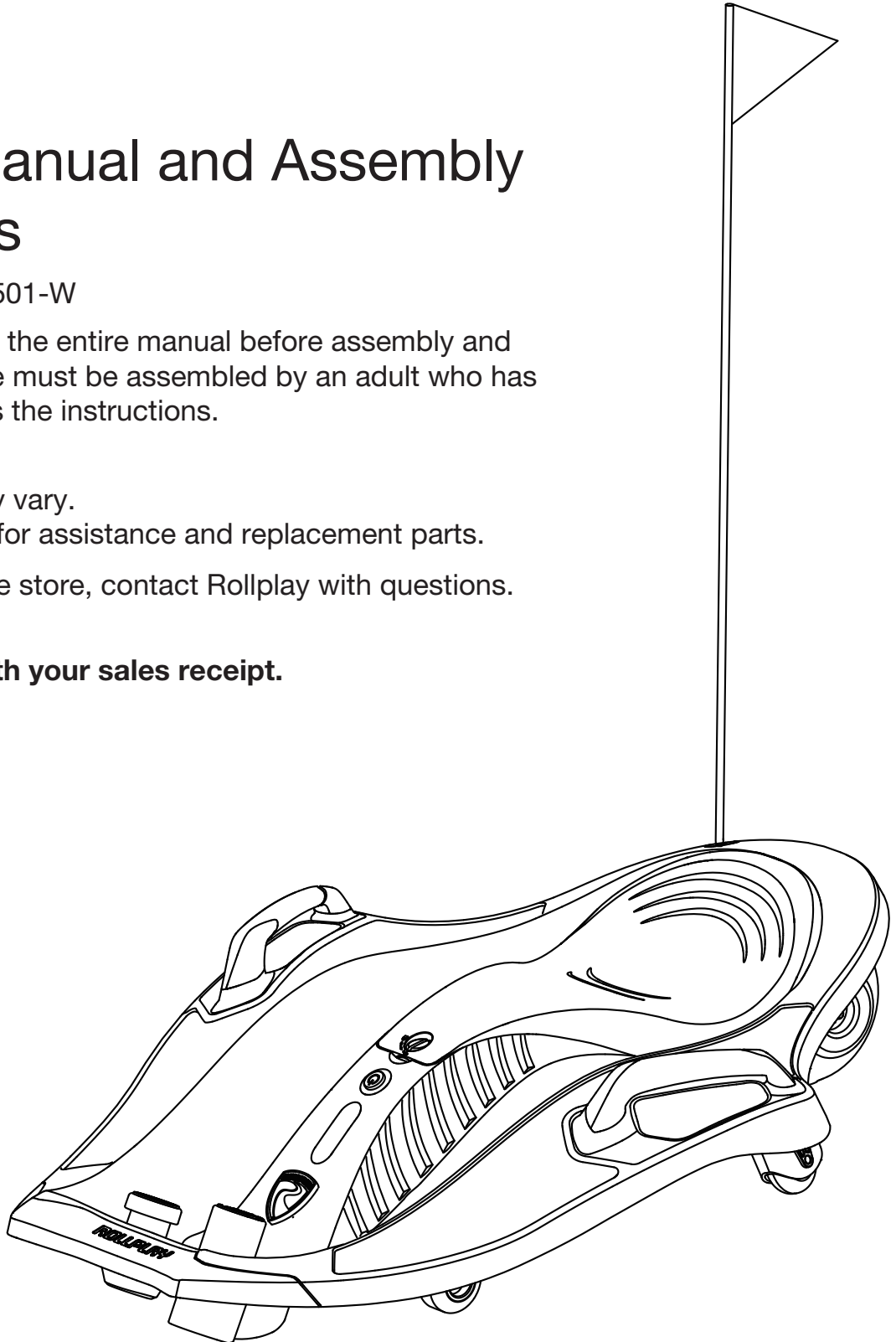
Styles and colors may vary.

Call 1-888-982-9309 for assistance and replacement parts.

Before returning to the store, contact Rollplay with questions.

### **IMPORTANT:**

**Save this manual with your sales receipt.**



# Introduction

Thank you for purchasing the Rollplay Nighthawk! We hope the rider enjoys it for miles to come. Please read this instruction guide carefully before assembling and operating the vehicle. Please have your model number and serial number ready before calling.

Please contact Rollplay Customer Service with any questions.

Please have proof of purchase. Keep your sales receipt or register your product at [www.rollplay.com](http://www.rollplay.com).

Hours: 9 AM - 5 PM (CST), Monday - Friday

Phone: 1-888-982-9309

Email: [customerservice@rollplay.com](mailto:customerservice@rollplay.com)

Web: [www.rollplay.com](http://www.rollplay.com)

For French inquiries, please email only at [customerservice@rollplay.com](mailto:customerservice@rollplay.com).

## Specifications:

BATTERY	12V 7AH
MOTOR	12V 100W
AGE	6 Years and Up
MAX WEIGHT	50 kg (110 lbs)
PRODUCT SIZE	79.5 x 65.5 x 21.5 cm (31.3 x 25.8 x 8.5 in)
SPEED	Up to 10.5 km/h (6.5 mph)
CHARGE TIME	8-12 Hours
RUN TIME	70-90 mins
CHARGER OUTPUT	DC 12V

# IMPORTANT!

## YOU MUST CHARGE THE BATTERY FOR 24 HOURS BEFORE FIRST USE!

Charge the battery after each use.

Charge the battery at least once a month, even if the vehicle is not in use.  
Do not charge for more than 30 hours.

**BEFORE RETURNING YOUR PRODUCT TO THE STORE, CONTACT ROLLPLAY WITH QUESTIONS.**

Call or email Customer Service if you need assistance or replacement parts. Please have your model number and serial number ready before calling. Please have proof of purchase. Keep your sales receipt or register your product at [www.rollplay.com](http://www.rollplay.com) as we require proof of purchase.

[customerservice@rollplay.com](mailto:customerservice@rollplay.com)

1-888-982-9309

**Read this entire manual to ensure proper assembly and safe operation of the vehicle.**

This page is intentionally left blank.

<b>Safety</b> .....	6
<b>Parts</b> .....	8
<b>Flagpole Assembly</b> .....	9
<b>Remove the Seat</b> .....	10
<b>Charge the Battery</b> .....	11
<b>Operating Instructions</b> .....	12
<b>Maintenance</b> .....	13
<b>General Care</b> .....	14
<b>Troubleshooting Guide</b> .....	15
<b>FCC Information</b> .....	16
<b>Service and Repairs</b> .....	17
<b>Warranty</b> .....	18
<b>Product Registration</b> .....	19

# 6 Safety



## WARNING: SAFETY RIDING RULES

- The user must follow all safety rules and guidelines, or serious injury or death may occur to the user.
- Always use common sense and safe practices when using the vehicle. The user must be at least 6 years old and weigh no more than 50 kg (110 lbs). The recommended rider age is only an estimate and can be affected by the rider's size, weight or skills. Any rider unable to fit comfortably on the Nighthawk should not attempt to ride it. A parent's decision to allow his or her child to ride this product should be based on child's maturity, skill and ability to follow rules.
- This product contains small parts that are for adult assembly only. Keep small children away when assembling. Remove and dispose of all protective material and plastic bags before assembly.
- Riders must always wear a fitted helmet that complies with U.S. Consumer Product Safety Commission (CPSC) Standard 16 CFR 1203. Elbow pads and knee pads, a long-sleeved shirt, long pants, and gloves are recommended. Always wear athletic shoes (lace-up shoes with rubber soles), never ride barefoot or in sandals, and keep shoelaces tied and out of the way of the wheels, motor, and drive system.
- Come to a stop when approaching an obstruction, turn away, and use the vehicle elsewhere.
- Only sit on the seat on the vehicle.
- Do not allow more than one rider.
- Do not overload the vehicle. Do not remove the weight restriction decals.
- Do not pull the vehicle with another vehicle or similar device.
- Keep body parts such as hands, legs, hair and clothing away from moving parts. Moving parts can cause serious injury.
- Always wear shoes on the vehicle.
- Do not operate near streets or motor vehicles.
- Do not operate near drop-offs such as steps, steep inclines, or hills. Operate on relatively level ground.
- Do not operate near water, swimming pools, or other fluids.
- Do not operate in dangerous weather conditions such as rain or snow.
- Do not operate near loose dirt, mud, sand, or fine gravel.
- Do not operate near flammable vapors (gasoline, paint thinner, acetone, etc).
- Always use the vehicle in a safe, secure environment with adult supervision.
- The vehicle should be used with caution as skill is required to avoid falls or collisions causing injury to the user and third parties.
- Do not touch the electric motor on your product when in use as it can become very hot.
- Do not activate the foot pedal throttle unless you are seated and in a safe, outdoor environment suitable for riding.
- This product was manufactured for performance and durability, but it is not impervious to damage. Bumping into obstacles, jumping or other aggressive riding can overstress and damage any product, including the Nighthawk, and the rider assumes all risk associated with high-stress activity.
- Secure hold on handle at all times.

### PREVENT INJURIES AND DEATHS:

**NEVER LEAVE CHILD UNATTENDED. ALWAYS** keep child in view when child is in vehicle. Direct adult supervision is **REQUIRED**.

**NEVER** use in roadways, near motor vehicles, on or near steep inclines or steps, swimming pools, or other bodies of water.

**ALWAYS** wear shoes, a helmet and shoes.

**ALWAYS** sit on the seat. Do NOT lean backwards.

**RISK OF FIRE.** Do not bypass.

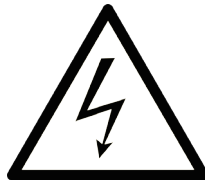


## WARNING: BATTERY SAFETY

- Battery posts, terminals and related accessories contain lead and lead compound components. DO NOT open the battery.



- Contact exposure to battery leakage (lead acid) may cause serious injury. Immediately contact your doctor if exposure occurs. If the chemical is on the skin, flush immediately with cool water for 15 minutes. If the chemical is swallowed, immediately give the person water or milk. Do not give water or milk if the person is vomiting or has decreased alertness. Do not induce vomiting.



- Tampering with or modifying the electric circuit system may cause shock, fire or explosion. It could permanently damage the system. Keep the charger housing closed to prevent exposed wiring, which may cause electric shock.

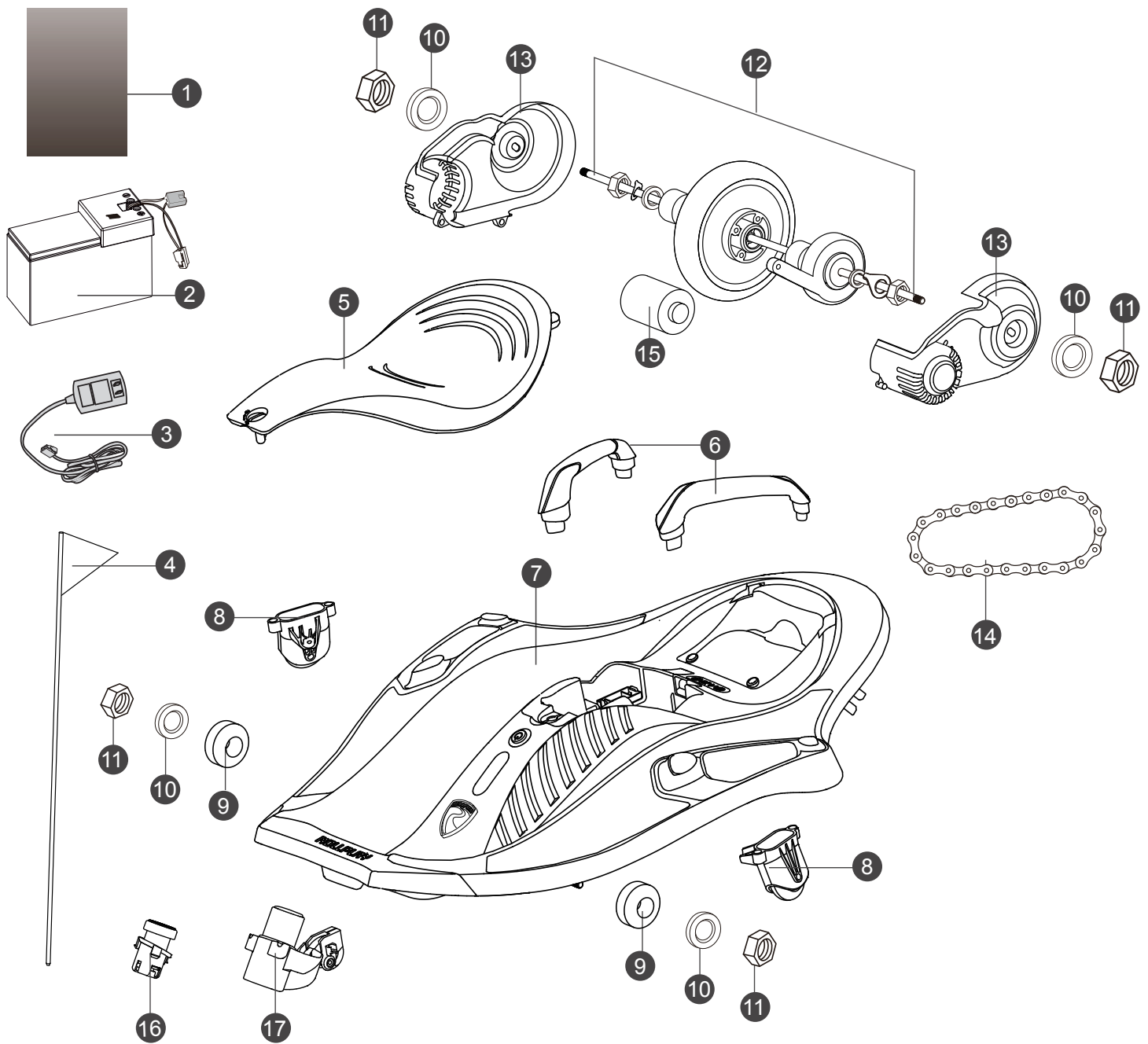
**IMPORTANT:** Before using the vehicle for the first time, the battery must be charged for a full 24 hours (no more than 30 hours).



## WARNING: ADULT SUPERVISION REQUIRED

- Before using the vehicle, the rider must understand the vehicle controls and safety issues.
- It is the responsibility of the adult to educate the child and to determine if the child is capable of understanding the vehicle controls.
- An adult must ALWAYS directly supervise the use of this vehicle.
- NEVER leave a child unsupervised in the vehicle.

# 8 Parts



1. Manual

2. Battery

3. Charger

4. Flagpole

5. Seat

6. Handle Bars (x2)

7. Vehicle Body

8. Support Wheels (x2)

9. Front Wheels

10. Washers (x4)

11. Wheel Nuts (x4)

12. Rear Wheel Assembly

13. Motor Cover

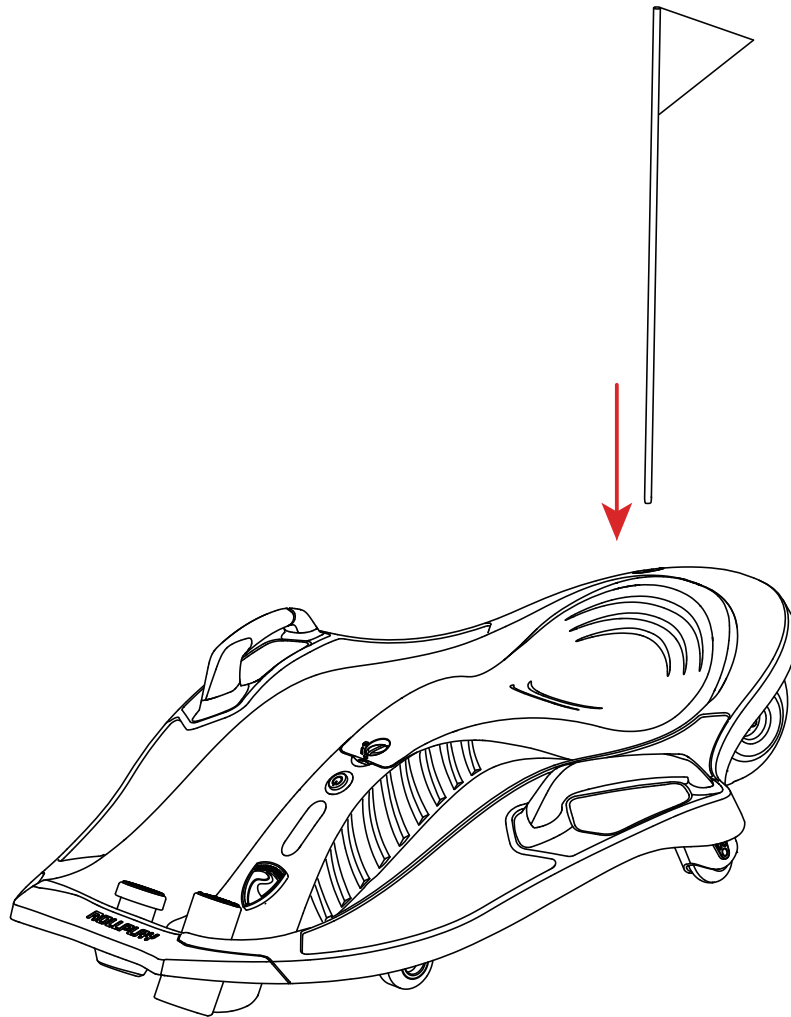
14. Chain

15. Motor

16. Gas Pedal ⚡

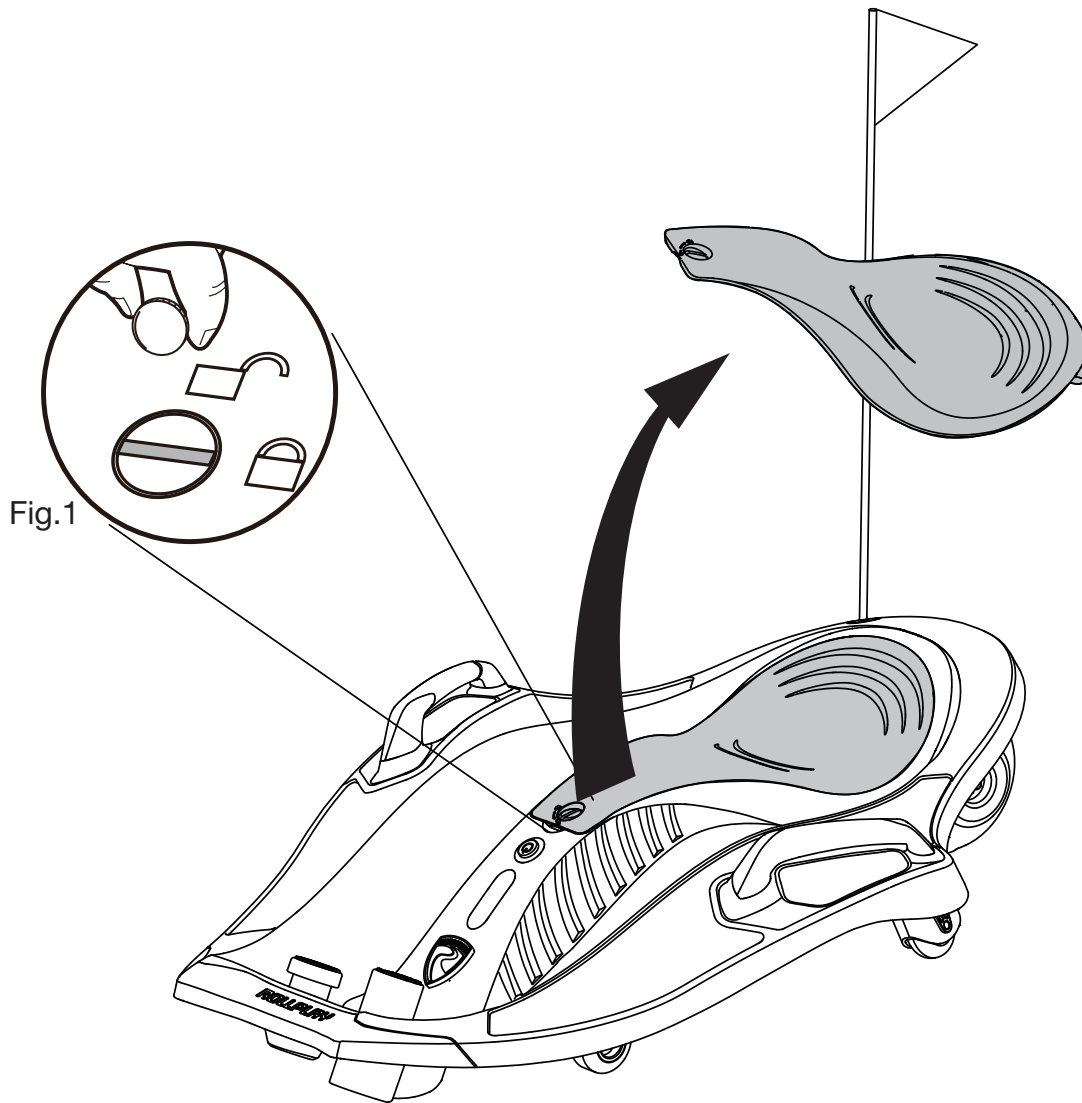
17. Brake Pedal Ⓞ





Insert the flagpole into the flagpole hole at the back of the vehicle.

# Remove the Seat



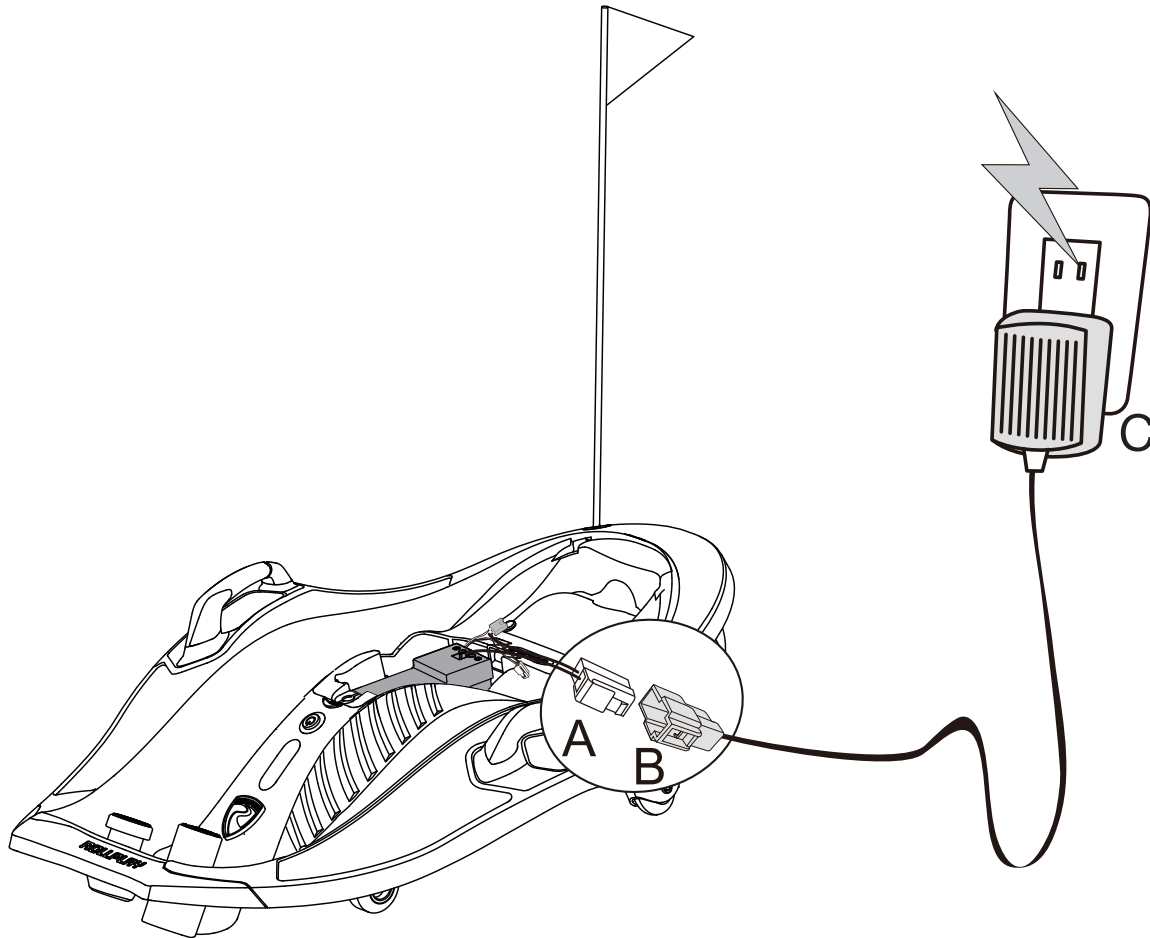
The battery is located underneath the seat. Please remove the seat to charge the battery.

## **Remove the Seat:**

Rotate the seat lock (Fig.1) to the unlock position and lift up the seat using the indentation at the front of the seat.

## **Install the Seat:**

After charging the battery (see page 11 for charging instructions), rotate the seat lock to the unlock position. Slide the seat into place on the vehicle body. Use a coin or flat head screwdriver to turn the lock to the locked position.



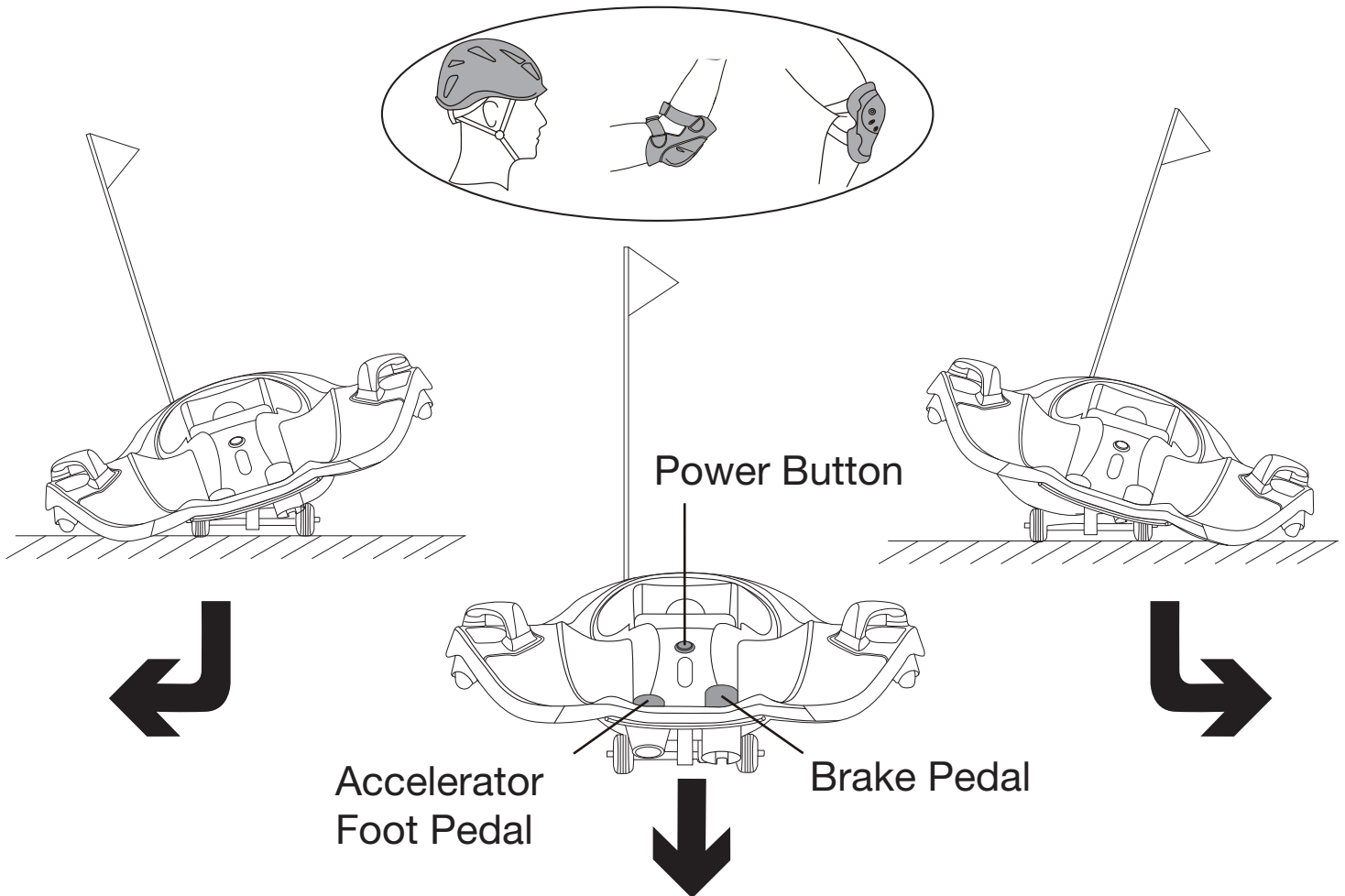
1. Ensure the vehicle is stopped and the power switch is turned off.
2. Unlock and remove the seat (see page 10 for seat removal instructions).
3. Unplug the red battery connector (A) from the red engine connector.
4. Connect the red battery connector (A) to the battery charger connector (B) and plug the battery charger into 120V outlet (C).



**Note:** Do not use the vehicle while it is plugged in.

# 12 Operating Instructions

 **Note:** Wear protective equipment including a helmet and padding to avoid possible injury.



## Driving Instructions:

Before riding the vehicle, ensure the battery is connected and seat is secure, and locked into place. Make sure the rider is seated and leaning forward. Press the power button to turn on the vehicle. The light will turn on if the vehicle is charged.

**To Begin:** Grip the handlebars tightly and lean forward while riding. Press the Accelerator Foot Pedal down slowly at first to go forward. The vehicle will stop if the foot pedal is released.

**To Brake:** Press down on the Brake Pedal to come to a stop.

**To Turn or Spin:** While moving, lean to the desired direction until the support wheel touches the ground. Note: Do not lean back while riding.

**To Drift:** Increase your speed, then take your foot off the gas pedal and lean into the side of the desired direction.

## Important Battery and Charger Information

- Only an adult who has read and understands the safety warnings may handle and operate the battery and battery charger. Keep away from children.
- Charge the battery for 24 hours before using the vehicle for the first time.
- Recharge the battery immediately after each use. Charge for at least 8-12 hours, but no more than 20 hours.
- Charge the battery at least once a month, even if the vehicle is not used or stored.
- Never leave the battery in a discharged condition.
- Connect the terminal of the battery and charger, then plug the charger into a 120V AC outlet.
- It is normal for the charger to heat slightly. If the charger rises above 71°C / 160°F, disconnect the charger and call Customer Service for assistance.
- Keep the charger away from water or excessive moisture to prevent short-circuiting.
- Only use the charger specified with the original item. **Do not charge the battery with any other charger.**
- Do not attempt to recharge non-rechargeable batteries with the original charger.
- **Do not replace the battery with any other battery, or the warranty will be voided.**
- Remove damaged batteries from the vehicle immediately. Recycle or dispose of the used batteries responsibly.
- Do not short circuit the supply terminals.
- Do not leave the battery connected in the vehicle for extended periods of time when the vehicle is not being used. Disconnect the battery connector from the engine connector before storing.
- The vehicle is equipped with a thermal fuse to protect the electric circuit. If the vehicle cuts out, turn the vehicle off and on to reset.

## 14 General Care

- Regularly inspect all vehicle parts to ensure they are in good working condition.
- Regularly inspect the charger, cord, plug, and other related parts for damage.
- Remove any damaged parts and immediately contact Customer Service for replacement parts. See Service information on Page 16.
- DO NOT operate the vehicle if there are any damaged parts.
- Carefully clean the vehicle with a damp cloth and mild soap. Do not get water in or near any electrical parts. Do not wash the vehicle with a hose.
- Store the vehicle indoors or use a tarp to cover it. Keep away from stoves, heaters, or other sources of heat.

# Troubleshooting Guide 15

Completely read through the manual and troubleshooting guide before contacting Customer Service.

Problem	Potential Cause	Solution
Vehicle does not run	Battery is low	Recharge the battery
	Battery terminal connector loose or detached	Reconnect battery connector
	Battery not charged	Recharge Battery
	Electrical Components Broken	Call Customer Service for troubleshooting
	Battery is dead	Call Customer Service for replacement battery
	Drive chain fell off	Reinstall the chain
	Motor is damaged	Call Customer Service
Vehicle only runs for a short time	Undercharged battery	Ensure a secure connection when the battery is recharging. Recharge for at least 8-12 hours
	Overcharged battery	Never charge the battery for more than 30 hours
	Battery is old	Replace battery
Vehicle runs slowly	Battery is not fully charged	Ensure a secure connection when the battery is recharging
	Battery is old	Call Customer Service to order replacement battery
	Too much weight on vehicle	Reduce weight on vehicle (Max. Weight: 50 kg / 110 lb)
	Harsh conditions	Operate the vehicle on level ground and safe surfaces
	Caster Wheel is Worn	Call Customer Service
Motor or gearbox making grinding noise	Motor or gear damage	Call Customer Service
Vehicle unable to drift	Support wheel screw is loose	Tighten the screw
	Support wheel is wor	Replace caster wheel

## 16 **FCC Information**

This device complies with part 15 of the FCC Rules. Operation is subject to the following two conditions: (1) this device may not cause harmful interference, and (2) this device must accept any interference received, including interference that may cause undesired operation.

This equipment has been tested and found to comply with the limits for a Class B digital device, pursuant to Part 15 of the FCC Rules. These limits are designed to provide reasonable protection against harmful interference in a residential installation.

This equipment generates, uses and can radiate radio frequency energy and, if not installed and used in accordance with the instructions, may cause harmful interference to radio communications. However, there is no guarantee that interference will not occur in a particular installation. If this equipment does cause harmful interference to radio or television reception, which can be determined by turning the equipment off and on, the user is encouraged to try to correct the interference by one or more of the following measures:

- Reorient or relocate the receiving antenna.
- Increase the distance between the equipment and the receiver.
- Consult dealer or an experienced radio/TV technician for help.
- Connect the equipment into an outlet on a circuit different from that to which the receiver is connected.
- Check the state or local requirements for the product before using the product.

**Caution:** Changes or modifications not expressly approved by the party responsible for compliance could void the user's authority to operate the equipment.



## **Before returning your vehicle to the store, contact Rollplay with questions**

If your product requires service, repairs or replacement parts, please contact Rollplay Customer Service.

Hours: 9 AM - 5 PM (CST), Monday - Friday

Phone: 1-888-982-9309

Email: [customerservice@rollplay.com](mailto:customerservice@rollplay.com)

Web: [www.rollplay.com](http://www.rollplay.com)

For a list of available replacement parts, please visit [www.rollplay.com](http://www.rollplay.com)

**WE WILL REQUIRE PROOF OF PURCHASE.** Please save your sales receipt or register your product at [www.rollplay.com](http://www.rollplay.com).

# 18 Warranty

## Rollplay 12-Volt Limited Warranty

- One-year limited warranty from the date of purchase with proof of purchase from **a Rollplay certified retailer.**
- Six month limited warranty on the 12-Volt battery with proof of purchase from a **Rollplay certified retailer.**
- This one-year limited warranty covers the ride-on vehicle against defects in materials and workmanship to the original purchaser. **Proof of purchase receipt from a Rollplay certified reseller is required.**
- Rollplay ensures the original 12-Volt battery is warranted for 6 months from initial purchase of the vehicle from a certified retailer. Proof of purchase receipt required.
- This warranty covers normal use and does not cover the Rollplay vehicle or battery if deemed damaged by unreasonable use, modification, neglect, accident, abuse, misuse, improper service or other causes not arising out of defects in materials or workmanship. Evidence of any attempt at consumer repair will void this warranty.
- This warranty does not cover, and is not intended to exclude any liability on the part of Rollplay, whether under this warranty or implied by law for any indirect or consequential damages for breach of warranty. Some states may not allow the exclusion or limitation so this limitation may not apply to you.

Should you need service or assistance with your vehicle during the warranty period:

- Please do not return vehicle to the store.
  - Consult the troubleshooting guide in this manual and online at [www.rollplay.com](http://www.rollplay.com)
- or
- Call Rollplay Customer Service at 1-888-982-9309

Note: This warranty gives you specific legal rights. You may also have other rights that may vary from state to state.

**Please save your original sales receipt.**

Fill out the form below and mail it to:

Rollplay Products  
1131 W Blackhawk St.  
Second Floor  
Chicago, IL 60642

OR fill out the form online at **[www.rollplay.com](http://www.rollplay.com)**

We will use the information provided only for your warranty. We will not sell, rent or share your personal information.

---

## Product Registration

First Name: \_\_\_\_\_ Last Name: \_\_\_\_\_ Title: \_\_\_\_\_

Address: \_\_\_\_\_

City: \_\_\_\_\_ State: \_\_\_\_\_ Zip Code: \_\_\_\_\_

Email: \_\_\_\_\_ Phone: \_\_\_\_\_

Date of Purchase: \_\_\_\_\_

The following product information is on the cover of the owner's manual.

Product Name: \_\_\_\_\_ Model Number: \_\_\_\_\_

Serial Number: \_\_\_\_\_ Retailer Place of Purchase: \_\_\_\_\_

