



6V Express Train (5F60D19) Customer Service Guide



Customer Service Guide



Contents

I) Check Wiring	3
II) Gearbox Replacement	5
III) Steering Wheel Replacement.....	8
VIII) Warning Stickers	10
IX) Schematic diagram	12

CAUTION :

Disconnect the battery before proceeding with any of the following steps.

Customer Service Guide

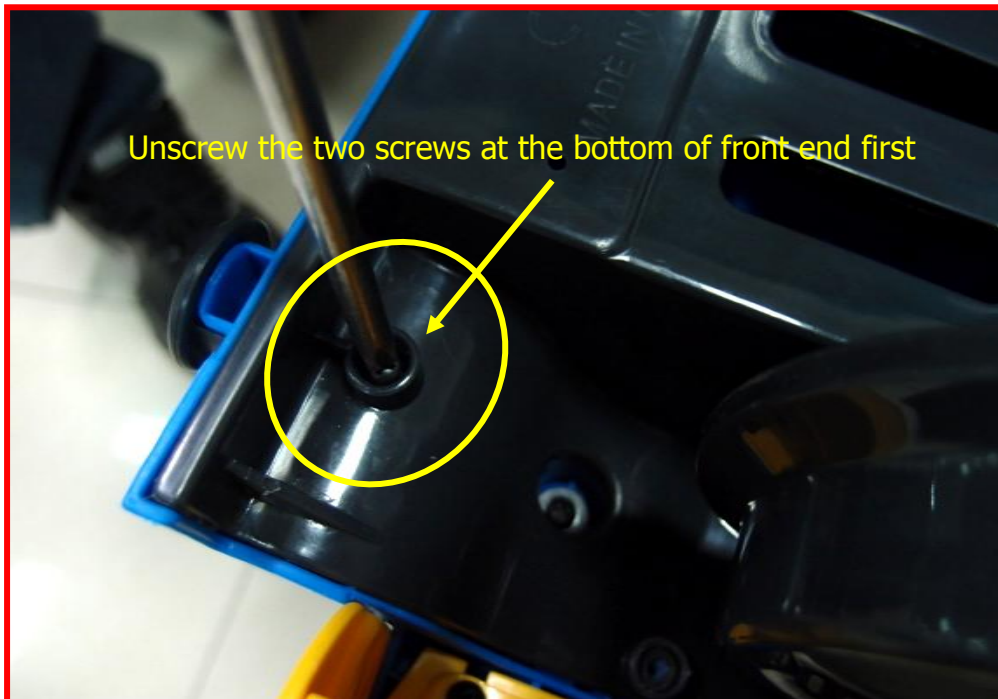


I) Check Wiring Connections

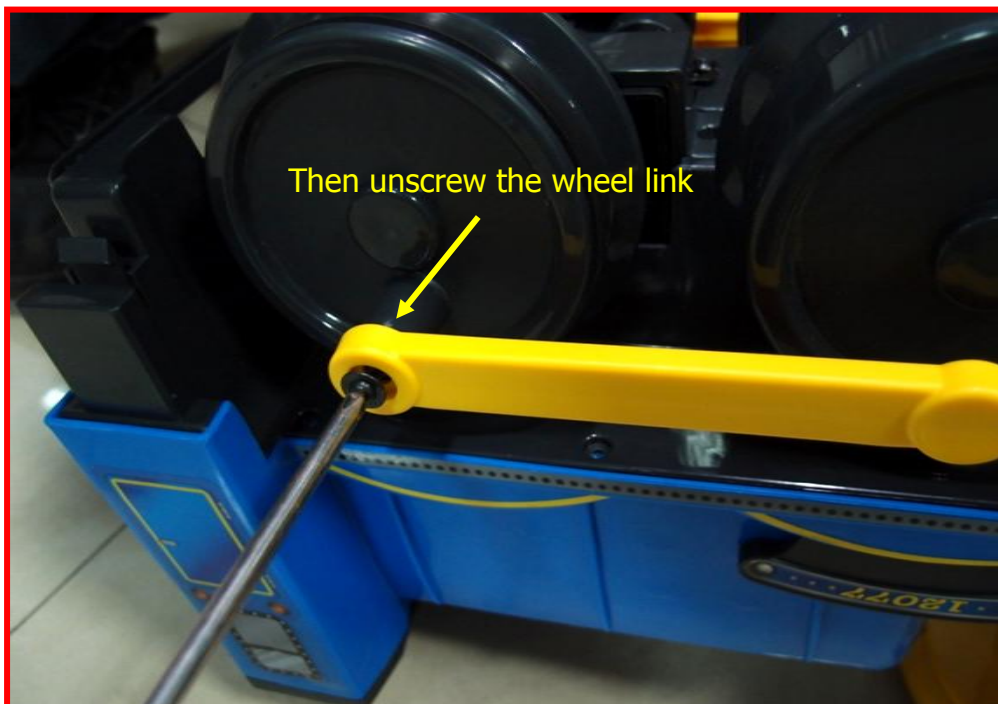
Operation: There are four groups of connections that should be checked.

Follow below procedures to remove the chassis, access the connectors inside, and then check for any connection problems.

Step (1)



Step (2)

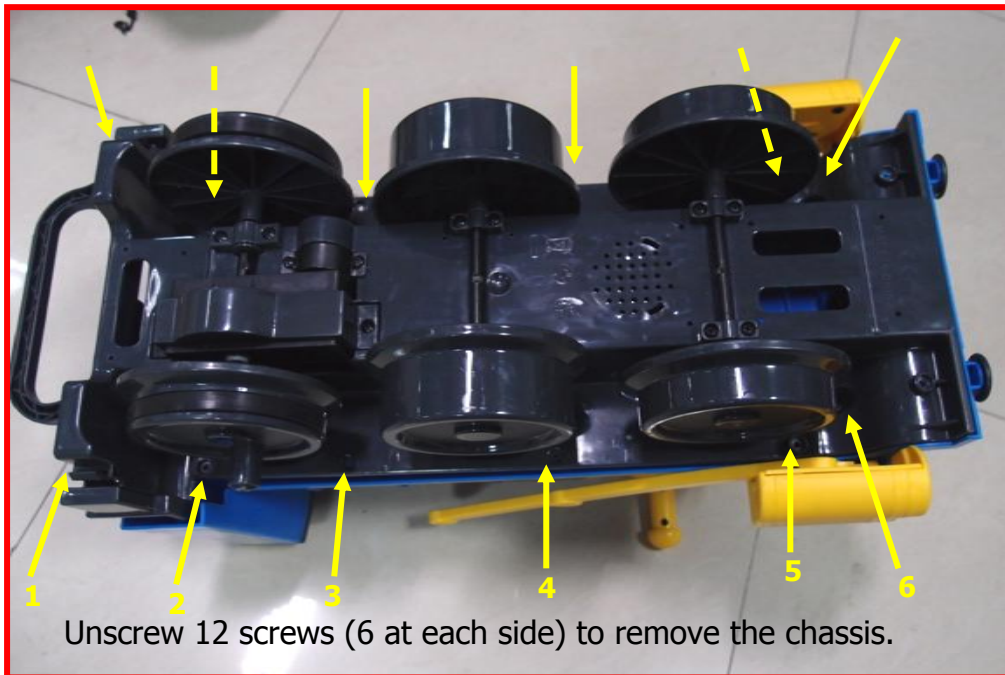


Customer Service Guide

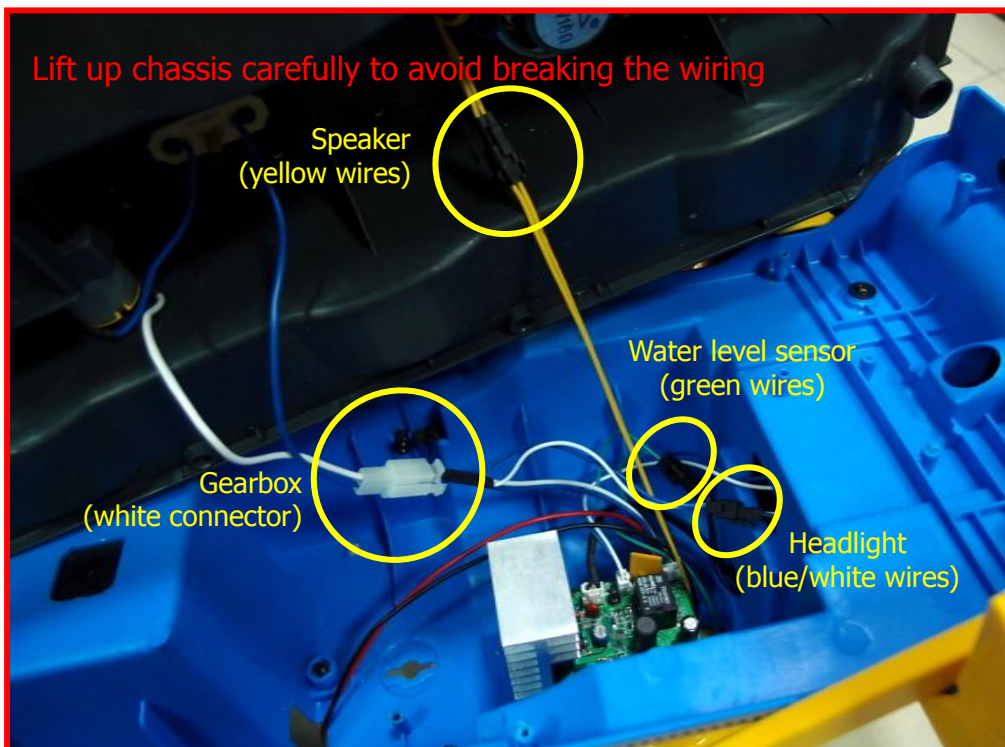


I) Check Wiring Connection

Step (3)



Step (4)



Reverse above procedures to re-assemble the train.

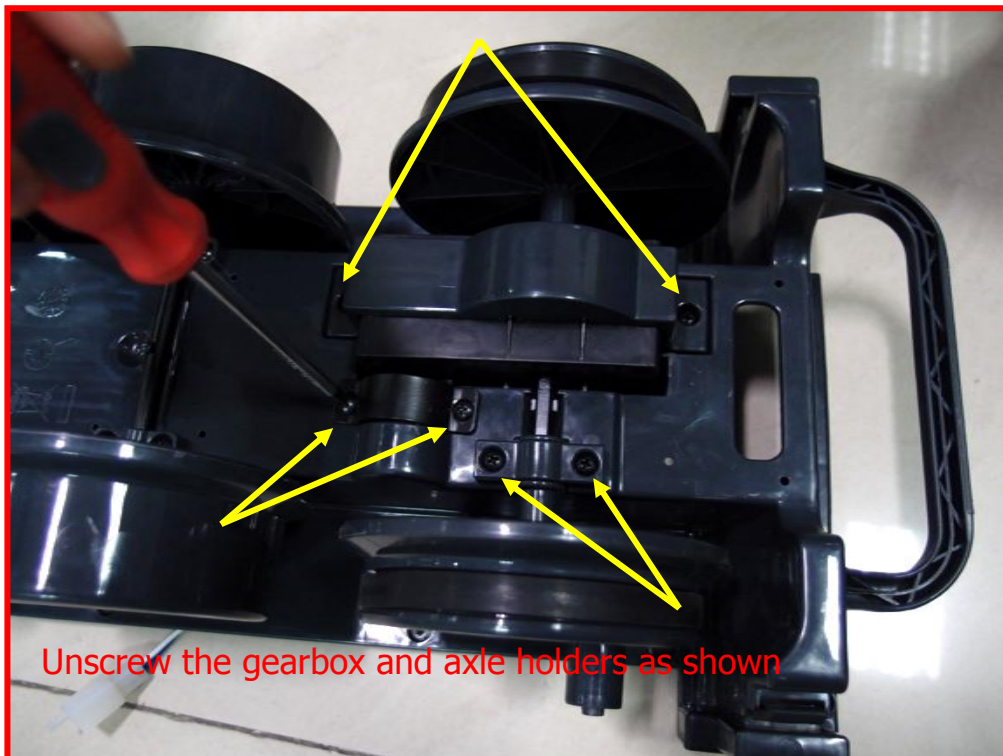
Customer Service Guide



II) Gearbox Replacement

Operation: Follow the chassis removal procedure in Part I

Step (1)



Step (2)

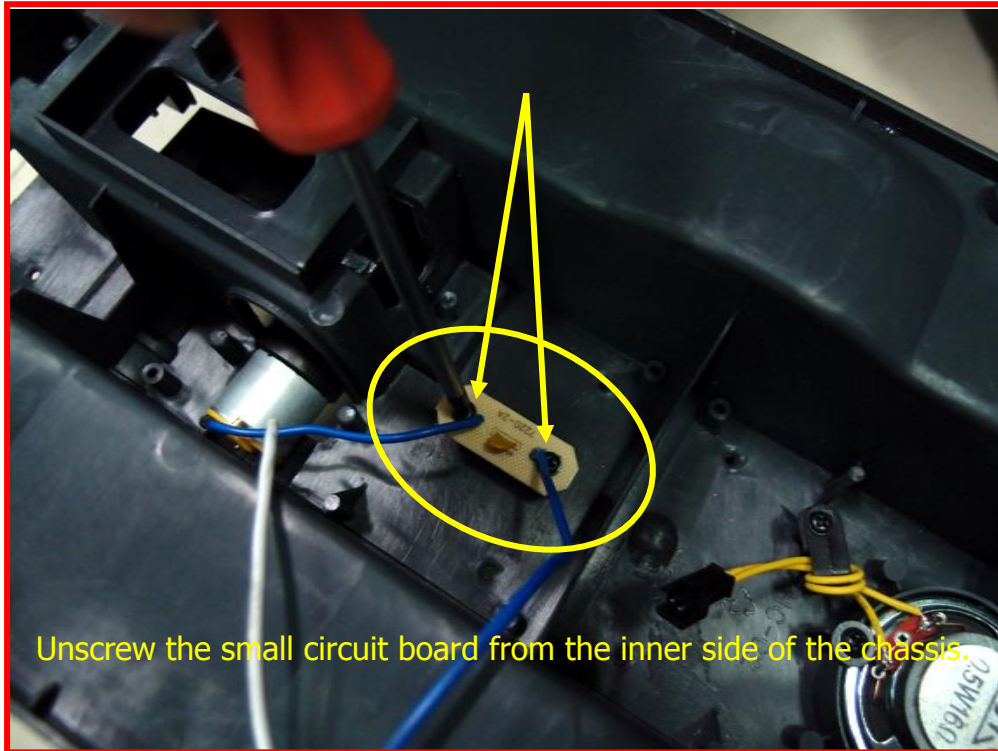


Customer Service Guide



II) Gearbox Replacement

Step (3)



Step (4)



Customer Service Guide



II) Gearbox Replacement

Step
(5)



Reverse above procedures to re-assemble the train.

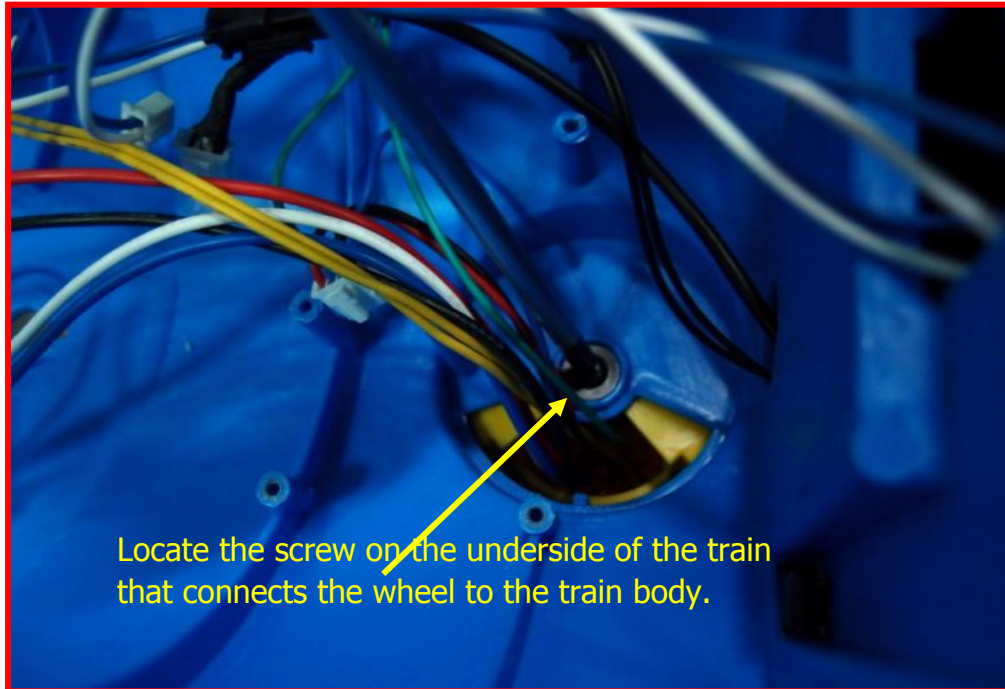
Customer Service Guide



III) Steering Wheel Replacement

Operation: Follow Part I to remove the chassis and unplug the four connections in I.4

Step (1)



Step (2)

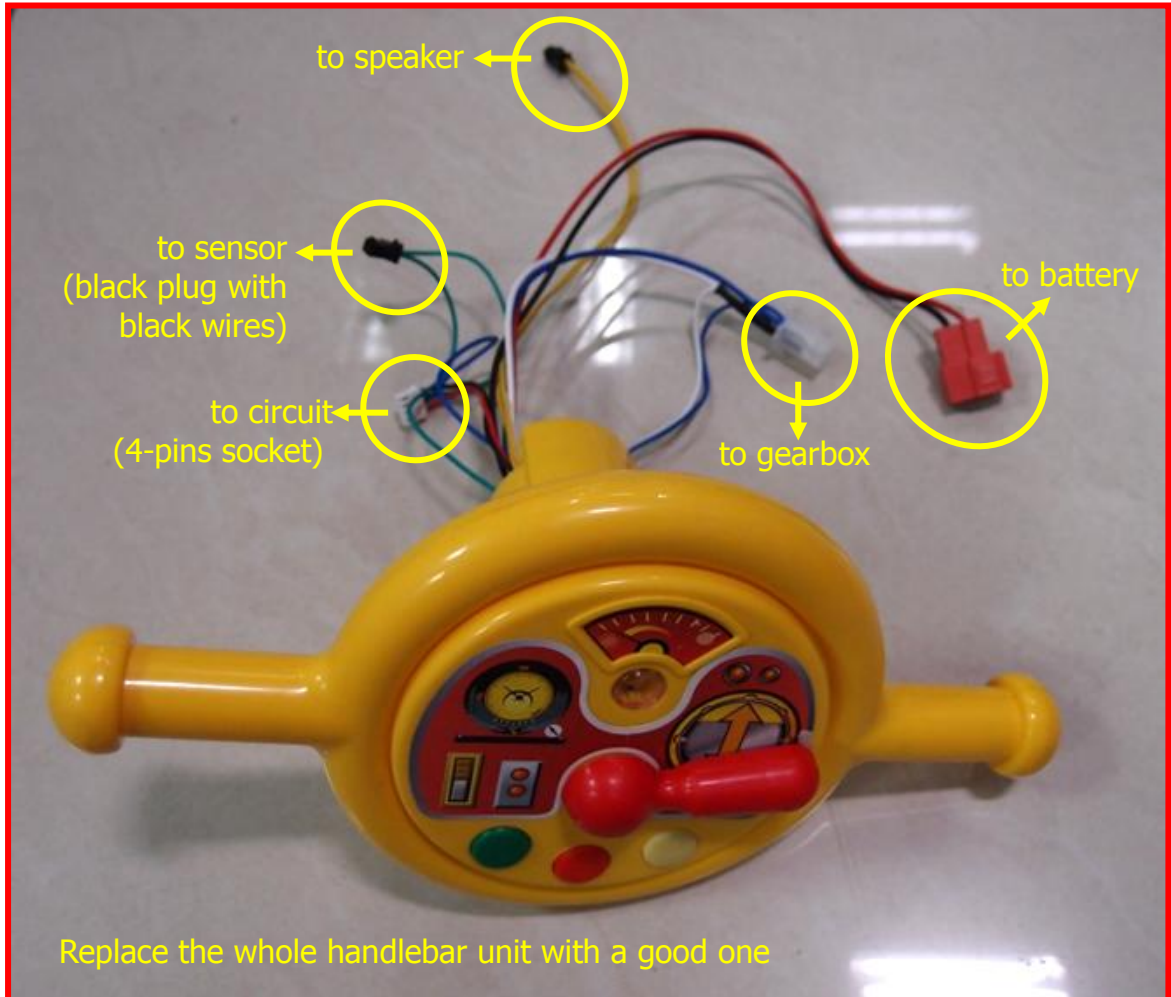


Customer Service Guide



III) Steering Wheel Replacement

Step
(3)



Reverse above procedures to re-assemble the train

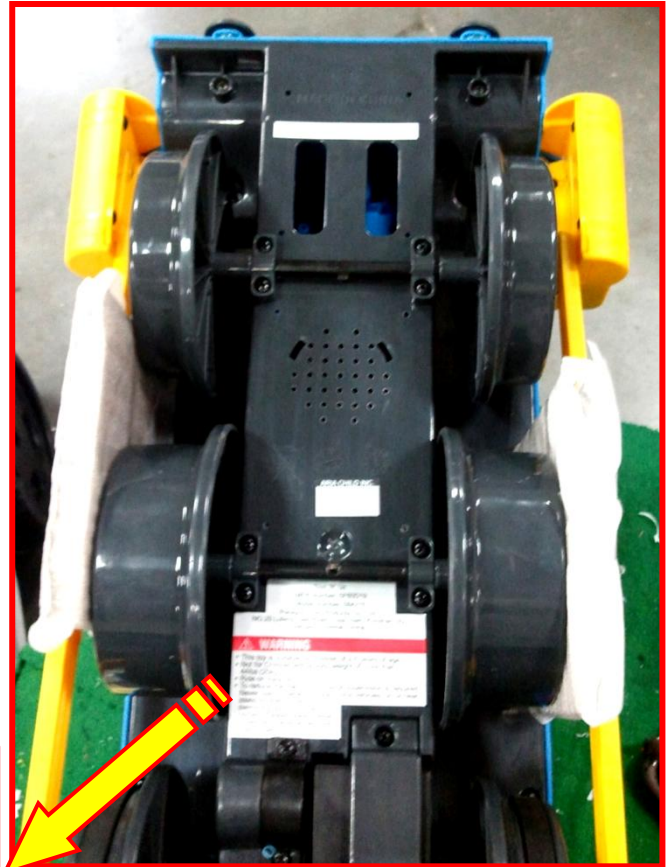
Customer Service Guide



IV) Warning Stickers

Operation: Check and replace the damaged warning stickers after repairing.

(1) At the bottom



Toys 'R' Us
MFR Number: 5F60D19
Model Number: 684276
Paragon Child Products Co., Ltd.
NO.20 Lufeng East Road, Lujia Town, Kunshan city,
Jiangsu Province, China.

WARNING

- This toy is suitable for children of 2-5 years of age.
- Not for Children with a body weight of more than 44lbs (20kg).
- Ride on track only.
- To reduce the risk of injury, adult supervision is required. Never use in roadways, near motor vehicles, on or near steep inclines or steps, swimming pools or other bodies of water; always wear shoes, and never allow more than 1 rider.

Customer Service Guide



IV) Warning Stickers

(2) Next to the battery



WARNING

To reduce the risk of injury, adult supervision is required. Never use in roadways, near motor vehicles, on or near steep inclines or steps, swimming pools or other bodies of water; always wear shoes, and never allow more than 1 rider.

RISK OF FIRE. Do not bypass. Replace only with electrical components that manufacturer provided. Only use the supplied 6V rechargeable battery and charger with the vehicle.

Circuit protection (metal piece): OTTER 5.5A 8055K



Customer Service Guide



IX) Wirings Schematic

